

UBE1L rabbit pAb**Cat#: orb766539 (Manual)**

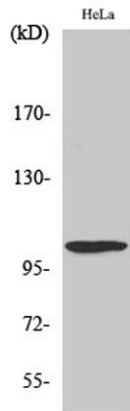
For research use only. Not intended for diagnostic use.

Product Name	UBE1L rabbit pAb
Host species	Rabbit
Applications	WB;IHC;IF;ELISA
Species Cross-Reactivity	Human;Rat;Mouse;
Recommended dilutions	Western Blot: 1/500 - 1/2000. Immunohistochemistry: 1/100 - 1/300. ELISA: 1/10000. Not yet tested in other applications.
Immunogen	The antiserum was produced against synthesized peptide derived from human UBE1L. AA range:963-1012
Specificity	UBE1L Polyclonal Antibody detects endogenous levels of UBE1L protein.
Formulation	Liquid in PBS containing 50% glycerol, 0.5% BSA and 0.02% sodium azide..
Storage	Store at -20°C. Avoid repeated freeze-thaw cycles.
Protein Name	Ubiquitin-like modifier-activating enzyme 7
Gene Name	UBA7
Cellular localization	nucleus,nucleoplasm,cytosol,
Purification	The antibody was affinity-purified from rabbit antiserum by affinity-chromatography using epitope-specific immunogen.
Clonality	Polyclonal

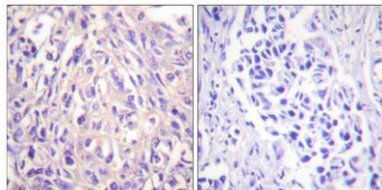
Concentration	1 mg/ml
Observed band	112kD
Human Gene ID	7318
Human Swiss-Prot Number	P41226
Alternative Names	UBA7; UBE1L; UBE2; Ubiquitin-like modifier-activating enzyme 7; Ubiquitin-activating enzyme 7; D8; Ubiquitin-activating enzyme E1 homolog

Background

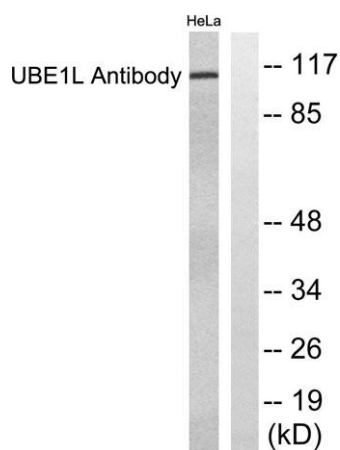
The modification of proteins with ubiquitin is an important cellular mechanism for targeting abnormal or short-lived proteins for degradation. Ubiquitination involves at least three classes of enzymes: ubiquitin-activating enzymes, or E1s, ubiquitin-conjugating enzymes, or E2s, and ubiquitin-protein ligases, or E3s. This gene encodes a member of the E1 ubiquitin-activating enzyme family. The encoded enzyme is a retinoid target that triggers promyelocytic leukemia (PML)/retinoic acid receptor alpha (RARalpha) degradation and apoptosis in acute promyelocytic leukemia, where it is involved in the conjugation of the ubiquitin-like interferon-stimulated gene 15 protein. [provided by RefSeq, Jul 2008],



Western Blot analysis of various cells using UBE1L Polyclonal Antibody diluted at 1:2000. Secondary antibody(catalog#:RS0002) was diluted at 1:20000



Immunohistochemistry analysis of paraffin-embedded human breast carcinoma tissue, using UBE1L Antibody. The picture on the right is blocked with the synthesized peptide.



Western blot analysis of lysates from HeLa cells, using UBE1L Antibody. The lane on the right is blocked with the synthesized peptide.