

**Uba5 rabbit pAb****Cat#: orb766537 (Manual)**

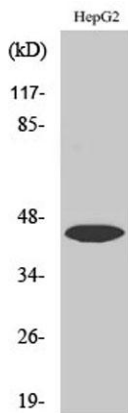
For research use only. Not intended for diagnostic use.

<b>Product Name</b>	Uba5 rabbit pAb
<b>Host species</b>	Rabbit
<b>Applications</b>	WB;IHC;IF;ELISA
<b>Species Cross-Reactivity</b>	Human;Mouse;Rat
<b>Recommended dilutions</b>	Western Blot: 1/500 - 1/2000. Immunohistochemistry: 1/100 - 1/300. ELISA: 1/5000. Not yet tested in other applications.
<b>Immunogen</b>	The antiserum was produced against synthesized peptide derived from human UBA5. AA range:281-330
<b>Specificity</b>	Uba5 Polyclonal Antibody detects endogenous levels of Uba5 protein.
<b>Formulation</b>	Liquid in PBS containing 50% glycerol, 0.5% BSA and 0.02% sodium azide..
<b>Storage</b>	Store at -20°C. Avoid repeated freeze-thaw cycles.
<b>Protein Name</b>	Ubiquitin-like modifier-activating enzyme 5
<b>Gene Name</b>	UBA5
<b>Cellular localization</b>	Cytoplasm . Nucleus . Endoplasmic reticulum membrane . Golgi apparatus . Localizes mainly in the cytoplasm, while it localizes to the nucleus in presence of SUMO2 (PubMed:18442052). Interaction with GABARAPL2 promotes localization to the endoplasmic reticulum membrane (PubMed:30990354). .
<b>Purification</b>	The antibody was affinity-purified from rabbit antiserum by affinity-chromatography using epitope-specific immunogen.

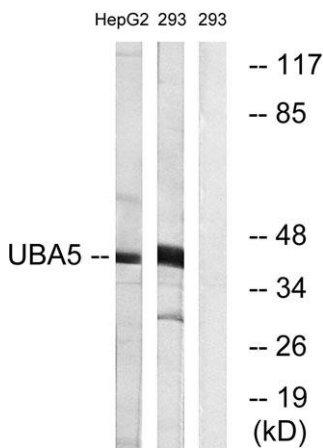
<b>Clonality</b>	Polyclonal
<b>Concentration</b>	1 mg/ml
<b>Observed band</b>	45kD
<b>Human Gene ID</b>	79876
<b>Human Swiss-Prot Number</b>	Q9GZZ9
<b>Alternative Names</b>	UBA5; UBE1DC1; Ubiquitin-like modifier-activating enzyme 5; Ubiquitin-activating enzyme 5; ThiFP1; UFM1-activating enzyme; Ubiquitin-activating enzyme E1 domain-containing protein 1

**Background**

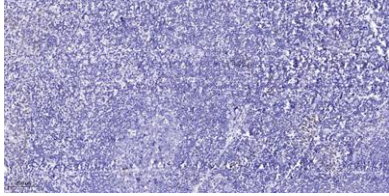
This gene encodes a member of the E1-like ubiquitin-activating enzyme family. This protein activates ubiquitin-fold modifier 1, a ubiquitin-like post-translational modifier protein, via the formation of a high-energy thioester bond. Alternative splicing results in multiple transcript variants. A pseudogene of this gene has been identified on chromosome 1. [provided by RefSeq, Feb 2016],



**Western Blot analysis of various cells using Uba5 Polyclonal Antibody. Secondary antibody(catalog#:RS0002) was diluted at 1:20000**



**Western blot analysis of lysates from HepG2 and 293 cells, using UBA5 Antibody. The lane on the right is blocked with the synthesized peptide.**



**Immunohistochemical analysis of paraffin-embedded human tonsil. 1, Antibody was diluted at 1:200(4° overnight). 2, Tris-EDTA,pH9.0 was used for antigen retrieval. 3,Secondary antibody was diluted at 1:200(room temperature, 45min).**