

Tyk 2 rabbit pAb**Cat#: orb766533 (Manual)**

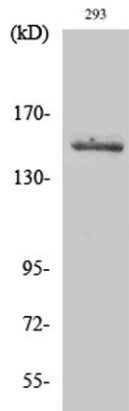
For research use only. Not intended for diagnostic use.

Product Name	Tyk 2 rabbit pAb
Host species	Rabbit
Applications	WB;IHC;IF;ELISA
Species Cross-Reactivity	Human;Mouse;Monkey
Recommended dilutions	Western Blot: 1/500 - 1/2000. Immunohistochemistry: 1/100 - 1/300. Immunofluorescence: 1/200 - 1/1000. ELISA: 1/10000. Not yet tested in other applications.
Immunogen	The antiserum was produced against synthesized peptide derived from human TYK2. AA range:1020-1069
Specificity	Tyk 2 Polyclonal Antibody detects endogenous levels of Tyk 2 protein.
Formulation	Liquid in PBS containing 50% glycerol, 0.5% BSA and 0.02% sodium azide..
Storage	Store at -20°C. Avoid repeated freeze-thaw cycles.
Protein Name	Non-receptor tyrosine-protein kinase TYK2
Gene Name	TYK2
Cellular localization	nucleus,cytoplasm,cytosol,cytoskeleton,membrane,extrinsic component of cytoplasmic side of plasma membrane,extracellular exosome,
Purification	The antibody was affinity-purified from rabbit antiserum by affinity-chromatography using epitope-specific immunogen.
Clonality	Polyclonal

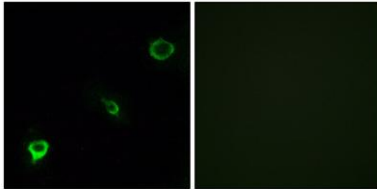
Concentration	1 mg/ml
Observed band	134kD
Human Gene ID	7297
Human Swiss-Prot Number	P29597
Alternative Names	TYK2; Non-receptor tyrosine-protein kinase TYK2

Background

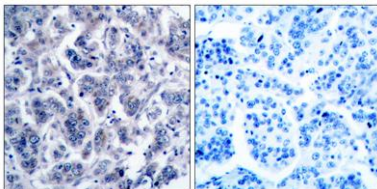
tyrosine kinase 2(TYK2) Homo sapiens This gene encodes a member of the tyrosine kinase and, more specifically, the Janus kinases (JAKs) protein families. This protein associates with the cytoplasmic domain of type I and type II cytokine receptors and promulgate cytokine signals by phosphorylating receptor subunits. It is also component of both the type I and type III interferon signaling pathways. As such, it may play a role in anti-viral immunity. A mutation in this gene has been associated with hyperimmunoglobulin E syndrome (HIES) - a primary immunodeficiency characterized by elevated serum immunoglobulin E. [provided by RefSeq, Jul 2008],



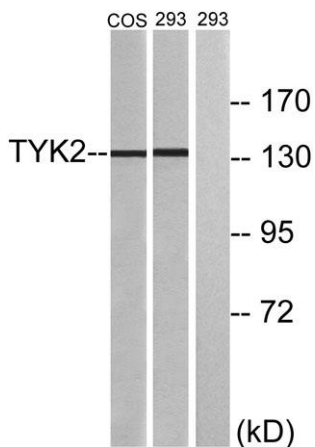
Western Blot analysis of various cells using Tyk 2 Polyclonal Antibody diluted at 1:2000. Secondary antibody(catalog#:RS0002) was diluted at 1:20000



Immunofluorescence analysis of COS7 cells, using TYK2 Antibody. The picture on the right is blocked with the synthesized peptide.



Immunohistochemistry analysis of paraffin-embedded human breast carcinoma tissue, using TYK2 Antibody. The picture on the right is blocked with the synthesized peptide.



Western blot analysis of lysates from 293 and COS7 cells, treated with heat shock, using TYK2 Antibody. The lane on the right is blocked with the synthesized peptide.