

TrxR2 rabbit pAb**Cat#: orb766522 (Manual)**

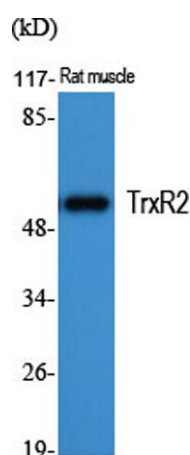
For research use only. Not intended for diagnostic use.

Product Name	TrxR2 rabbit pAb
Host species	Rabbit
Applications	WB;IHC;IF;ELISA
Species Cross-Reactivity	Human;Mouse;Rat
Recommended dilutions	Western Blot: 1/500 - 1/2000. Immunohistochemistry: 1/100 - 1/300. ELISA: 1/10000. Not yet tested in other applications.
Immunogen	The antiserum was produced against synthesized peptide derived from human TRXR2. AA range:471-520
Specificity	TrxR2 Polyclonal Antibody detects endogenous levels of TrxR2 protein.
Formulation	Liquid in PBS containing 50% glycerol, 0.5% BSA and 0.02% sodium azide..
Storage	Store at -20°C. Avoid repeated freeze-thaw cycles.
Protein Name	Thioredoxin reductase 2 mitochondrial
Gene Name	TXNRD2
Cellular localization	Mitochondrion .
Purification	The antibody was affinity-purified from rabbit antiserum by affinity-chromatography using epitope-specific immunogen.
Clonality	Polyclonal

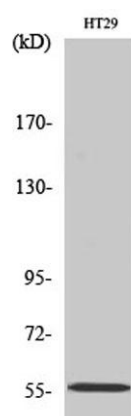
Concentration	1 mg/ml
Observed band	56kD
Human Gene ID	10587
Human Swiss-Prot Number	Q9NNW7
Alternative Names	TXNRD2; KIAA1652; TRXR2; Thioredoxin reductase 2; mitochondrial; Selenoprotein Z; SelZ; TR-beta; Thioredoxin reductase TR3

Background

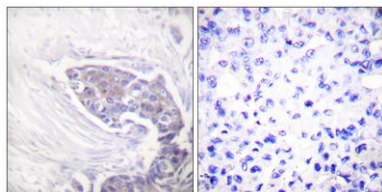
thioredoxin reductase 2(TXNRD2) Homo sapiens This gene encodes a member of the class I pyridine nucleotide-disulfide oxidoreductase family. The encoded protein is a selenocysteine-containing flavoenzyme that maintains thioredoxins in a reduced state, thereby playing a key role in regulating the cellular redox environment. Mammals have three related thioredoxin reductases. This gene encodes a mitochondrial form important for scavenging of reactive oxygen species in mitochondria. Alternatively spliced transcript variants encoding different isoforms have been described. [provided by RefSeq, Sep 2013],



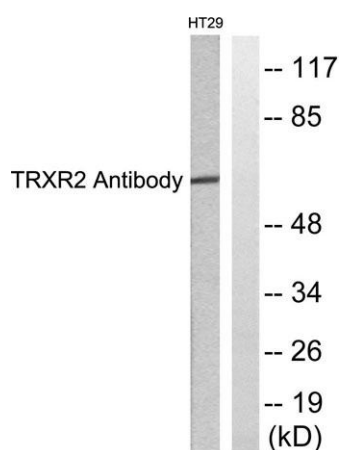
Western Blot analysis of various cells using TrxR2 Polyclonal Antibody. Secondary antibody(catalog#:RS0002) was diluted at 1:20000



Western Blot analysis of HT29 cells using TrxR2 Polyclonal Antibody. Secondary antibody(catalog#:RS0002) was diluted at 1:20000



Immunohistochemistry analysis of paraffin-embedded human breast carcinoma tissue, using TRXR2 Antibody. The picture on the right is blocked with the synthesized peptide.



Western blot analysis of lysates from HT29 cells, using TRXR2 Antibody. The lane on the right is blocked with the synthesized peptide.