

TRAF3 rabbit pAb**Cat#: orb766510 (Manual)**

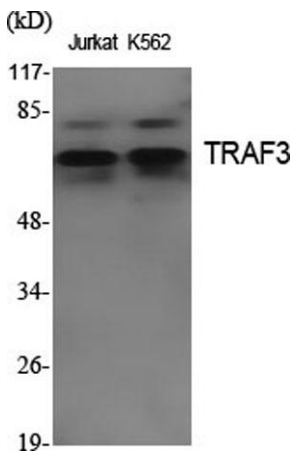
For research use only. Not intended for diagnostic use.

Product Name	TRAF3 rabbit pAb
Host species	Rabbit
Applications	WB;ELISA
Species Cross-Reactivity	Human;Mouse
Recommended dilutions	Western Blot: 1/500 - 1/2000. ELISA: 1/20000. Not yet tested in other applications.
Immunogen	The antiserum was produced against synthesized peptide derived from human TRAF3. AA range:240-289
Specificity	TRAF3 Polyclonal Antibody detects endogenous levels of TRAF3 protein.
Formulation	Liquid in PBS containing 50% glycerol, 0.5% BSA and 0.02% sodium azide..
Storage	Store at -20°C. Avoid repeated freeze-thaw cycles.
Protein Name	TNF receptor-associated factor 3
Gene Name	TRAF3
Cellular localization	Cytoplasm . Endosome . Mitochondrion . Undergoes endocytosis together with TLR4 upon LPS signaling (By similarity). Co-localized to mitochondria with TRIM35 (PubMed:32562145)..
Purification	The antibody was affinity-purified from rabbit antiserum by affinity-chromatography using epitope-specific immunogen.

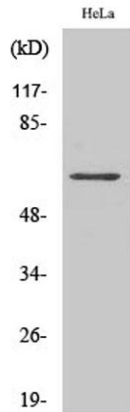
Clonality	Polyclonal
Concentration	1 mg/ml
Observed band	64kD
Human Gene ID	7187
Human Swiss-Prot Number	Q13114
Alternative Names	TRAF3; CAP1; CRAF1; TNF receptor-associated factor 3; CAP-1; CD40 receptor-associated factor 1; CRAF1; CD40-binding protein; CD40BP; LMP1-associated protein 1; LAP1

Background

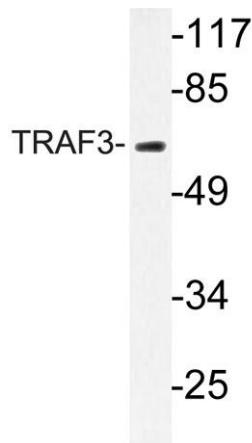
TNF receptor associated factor 3 (TRAF3) Homo sapiens The protein encoded by this gene is a member of the TNF receptor associated factor (TRAF) protein family. TRAF proteins associate with, and mediate the signal transduction from, members of the TNF receptor (TNFR) superfamily. This protein participates in the signal transduction of CD40, a TNFR family member important for the activation of the immune response. This protein is found to be a critical component of the lymphotoxin-beta receptor (LTbetaR) signaling complex, which induces NF-kappaB activation and cell death initiated by LTbeta ligation. Epstein-Barr virus encoded latent infection membrane protein-1 (LMP1) can interact with this and several other members of the TRAF family, which may be essential for the oncogenic effects of LMP1. Several alternatively spliced transcript variants encoding three distinct isoforms have been reported. [provided by RefSeq, Dec 2010],



Western Blot analysis of various cells using TRAF3 Polyclonal Antibody. Secondary antibody(catalog#:RS0002) was diluted at 1:20000



Western Blot analysis of COLO205 cells using TRAF3 Polyclonal Antibody. Secondary antibody(catalog#:RS0002) was diluted at 1:20000



Western blot analysis of lysate from HeLa cells, using TRAF3 antibody.