

TP53INP1 rabbit pAb**Cat#: orb766504 (Manual)**

For research use only. Not intended for diagnostic use.

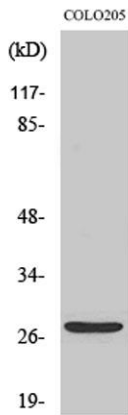
Product Name	TP53INP1 rabbit pAb
Host species	Rabbit
Applications	WB;IHC;IF;ELISA
Species Cross-Reactivity	Human;Rat;Mouse;
Recommended dilutions	Western Blot: 1/500 - 1/2000. Immunohistochemistry: 1/100 - 1/300. ELISA: 1/40000. Not yet tested in other applications.
Immunogen	The antiserum was produced against synthesized peptide derived from human TP53INP1. AA range:171-220
Specificity	TP53INP1 Polyclonal Antibody detects endogenous levels of TP53INP1 protein.
Formulation	Liquid in PBS containing 50% glycerol, 0.5% BSA and 0.02% sodium azide..
Storage	Store at -20°C. Avoid repeated freeze-thaw cycles.
Protein Name	Tumor protein p53-inducible nuclear protein 1
Gene Name	TP53INP1
Cellular localization	Cytoplasm, cytosol. Nucleus. Nucleus, PML body. Cytoplasmic vesicle, autophagosome. Shuttles between the nucleus and the cytoplasm, depending on cellular stress conditions, and re-localizes to autophagosomes on autophagy activation.
Purification	The antibody was affinity-purified from rabbit antiserum by affinity-chromatography using epitope-specific immunogen.

Explore. Bioreagents.

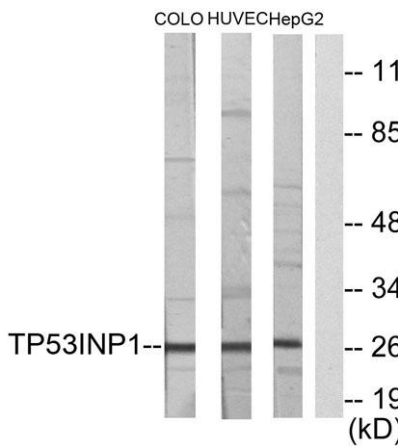
Clonality	Polyclonal
Concentration	1 mg/ml
Observed band	27kD
Human Gene ID	94241
Human Swiss-Prot Number	Q96A56
Alternative Names	TP53INP1; P53DINP1; SIP; Tumor protein p53-inducible nuclear protein 1; Stress-induced protein; p53-dependent damage-inducible nuclear protein 1; p53DINP1

Background

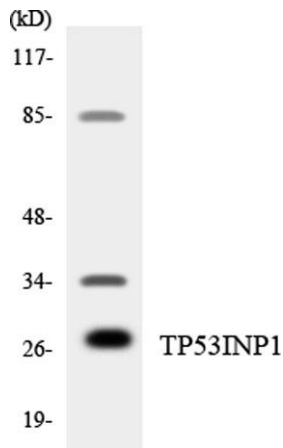
function: In response to double-strand DNA breaks, promotes p53/TP53 phosphorylation on 'Ser-46' and subsequent apoptosis. induction: By adriamycin, gamma irradiation and H₂O₂, in a p53-dependent way. At lower levels by ultraviolet irradiation. subcellular location: Concentrated in PML/POD/ND10 nuclear bodies. subunit: Interacts with TP53 and HIPK2. tissue specificity: Ubiquitously expressed.



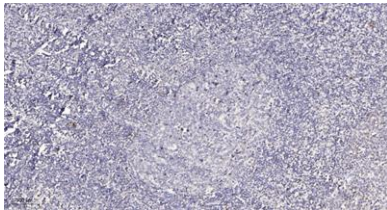
Western Blot analysis of various cells using TP53INP1 Polyclonal Antibody diluted at 1:1000. Secondary antibody(catalog#:RS0002) was diluted at 1:20000 cells nucleus extracted by Minute TM Cytoplasmic and Nuclear Fractionation kit (SC-003, Invent biotech, MN, USA).



Western blot analysis of lysates from COLO205, HUVEC, and HepG2 cells, using TP53INP1 Antibody. The lane on the right is blocked with the synthesized peptide.



Western blot analysis of the lysates from HT-29 cells using TP53INP1 antibody.



Immunohistochemical analysis of paraffin-embedded human tonsil. 1, Antibody was diluted at 1:200(4° overnight). 2, Tris-EDTA,pH9.0 was used for antigen retrieval. 3,Secondary antibody was diluted at 1:200(room temperature, 30min).