

TMPRSS3 rabbit pAb**Cat#: orb766494 (Manual)**

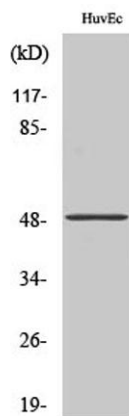
For research use only. Not intended for diagnostic use.

Product Name	TMPRSS3 rabbit pAb
Host species	Rabbit
Applications	WB;IHC;IF;ELISA
Species Cross-Reactivity	Human;Mouse
Recommended dilutions	Western Blot: 1/500 - 1/2000. Immunohistochemistry: 1/100 - 1/300. Immunofluorescence: 1/200 - 1/1000. ELISA: 1/10000. Not yet tested in other applications.
Immunogen	The antiserum was produced against synthesized peptide derived from human TMPRSS3. AA range:405-454
Specificity	TMPRSS3 Polyclonal Antibody detects endogenous levels of TMPRSS3 protein.
Formulation	Liquid in PBS containing 50% glycerol, 0.5% BSA and 0.02% sodium azide..
Storage	Store at -20°C. Avoid repeated freeze-thaw cycles.
Protein Name	Transmembrane protease serine 3
Gene Name	TMPRSS3
Cellular localization	Endoplasmic reticulum membrane ; Single-pass type II membrane protein .
Purification	The antibody was affinity-purified from rabbit antiserum by affinity-chromatography using epitope-specific immunogen.
Clonality	Polyclonal

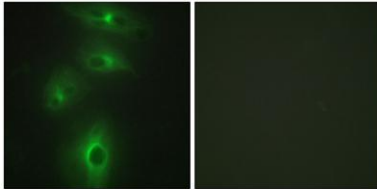
Concentration	1 mg/ml
Observed band	49kD
Human Gene ID	64699
Human Swiss-Prot Number	P57727
Alternative Names	TMPRSS3; ECHOS1; TADG12; Transmembrane protease serine 3; Serine protease TADG-12; Tumor-associated differentially-expressed gene 12 protein

Background

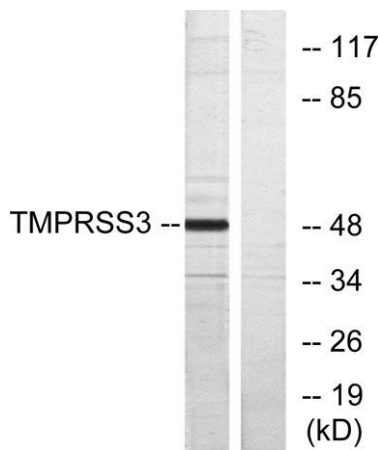
This gene encodes a protein that belongs to the serine protease family. The encoded protein contains a serine protease domain, a transmembrane domain, an LDL receptor-like domain, and a scavenger receptor cysteine-rich domain. Serine proteases are known to be involved in a variety of biological processes, whose malfunction often leads to human diseases and disorders. This gene was identified by its association with both congenital and childhood onset autosomal recessive deafness. This gene is expressed in fetal cochlea and many other tissues, and is thought to be involved in the development and maintenance of the inner ear or the contents of the perilymph and endolymph. This gene was also identified as a tumor-associated gene that is overexpressed in ovarian tumors. Alternatively spliced transcript variants have been described. [provided by RefSeq, Jan 2012],



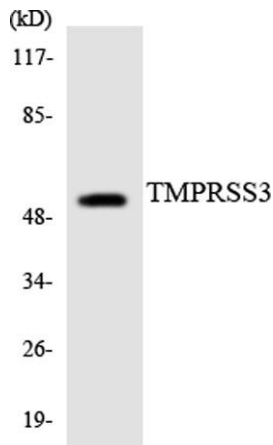
Western Blot analysis of various cells using TMPRSS3 Polyclonal Antibody. Secondary antibody(catalog#:RS0002) was diluted at 1:20000



Immunofluorescence analysis of HeLa cells, using TMPRSS3 Antibody. The picture on the right is blocked with the synthesized peptide.



Western blot analysis of lysates from HUVEC cells, using TMPRSS3 Antibody. The lane on the right is blocked with the synthesized peptide.



Western blot analysis of the lysates from HT-29 cells using TMPRSS3 antibody.