

**TIS11D rabbit pAb****Cat#: orb766489 (Manual)**

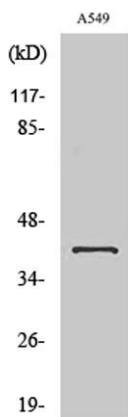
For research use only. Not intended for diagnostic use.

<b>Product Name</b>	TIS11D rabbit pAb
<b>Host species</b>	Rabbit
<b>Applications</b>	WB;IHC;IF;ELISA
<b>Species Cross-Reactivity</b>	Human;Mouse
<b>Recommended dilutions</b>	Western Blot: 1/500 - 1/2000. Immunohistochemistry: 1/100 - 1/300. ELISA: 1/20000. Not yet tested in other applications.
<b>Immunogen</b>	The antiserum was produced against synthesized peptide derived from human TISD. AA range:207-256
<b>Specificity</b>	TIS11D Polyclonal Antibody detects endogenous levels of TIS11D protein.
<b>Formulation</b>	Liquid in PBS containing 50% glycerol, 0.5% BSA and 0.02% sodium azide..
<b>Storage</b>	Store at -20°C. Avoid repeated freeze-thaw cycles.
<b>Protein Name</b>	Zinc finger protein 36 C3H1 type-like 2
<b>Gene Name</b>	ZFP36L2
<b>Cellular localization</b>	Nucleus . Cytoplasm . Shuttles between the nucleus and the cytoplasm in a XPO1/CRM1-dependent manner. .
<b>Purification</b>	The antibody was affinity-purified from rabbit antiserum by affinity-chromatography using epitope-specific immunogen.
<b>Clonality</b>	Polyclonal

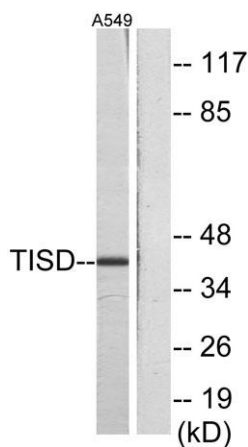
<b>Concentration</b>	1 mg/ml
<b>Observed band</b>	55kD
<b>Human Gene ID</b>	678
<b>Human Swiss-Prot Number</b>	P47974
<b>Alternative Names</b>	ZFP36L2; BRF2; ERF2; RNF162C; TIS11D; Zinc finger protein 36; C3H1 type-like 2; ZFP36-like 2; Butyrate response factor 2; EGF-response factor 2; ERF-2; Protein TIS11D

**Background**

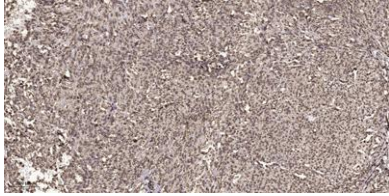
This gene is a member of the TIS11 family of early response genes. Family members are induced by various agonists such as the phorbol ester TPA and the polypeptide mitogen EGF. The encoded protein contains a distinguishing putative zinc finger domain with a repeating cys-his motif. This putative nuclear transcription factor most likely functions in regulating the response to growth factors. [provided by RefSeq, Jul 2008],



**Western Blot analysis of various cells using TIS11D Polyclonal Antibody. Secondary antibody(catalog#:RS0002) was diluted at 1:20000**



**Western blot analysis of lysates from A549 cells, using TISD Antibody. The lane on the right is blocked with the synthesized peptide.**



**Immunohistochemical analysis of paraffin-embedded human small intestinal carcinoma tissue. 1,primary Antibody was diluted at 1:200(4° overnight). 2, Sodium citrate pH 6.0 was used for antigen retrieval(>98°C,20min). 3,Secondary antibody was diluted at 1:2**