

TGF α rabbit pAb**Cat#: orb766468 (Manual)**

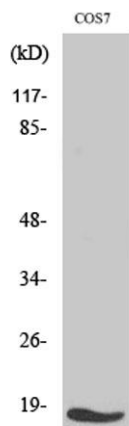
For research use only. Not intended for diagnostic use.

| | |
|---------------------------------|---|
| Product Name | TGF α rabbit pAb |
| Host species | Rabbit |
| Applications | WB;IHC;IF;ELISA |
| Species Cross-Reactivity | Human;Mouse;Rat;Monkey |
| Recommended dilutions | Western Blot: 1/500 - 1/2000. Immunohistochemistry: 1/100 - 1/300. ELISA: 1/10000. Not yet tested in other applications. |
| Immunogen | The antiserum was produced against synthesized peptide derived from human TGF alpha. AA range:111-160 |
| Specificity | TGF α Polyclonal Antibody detects endogenous levels of TGF α protein. |
| Formulation | Liquid in PBS containing 50% glycerol, 0.5% BSA and 0.02% sodium azide.. |
| Storage | Store at -20°C. Avoid repeated freeze-thaw cycles. |
| Protein Name | Protransforming growth factor alpha |
| Gene Name | TGFA |
| Cellular localization | [Transforming growth factor alpha]: Secreted, extracellular space.; [Protransforming growth factor alpha]: Cell membrane; Single-pass type I membrane protein. |
| Purification | The antibody was affinity-purified from rabbit antiserum by affinity-chromatography using epitope-specific immunogen. |

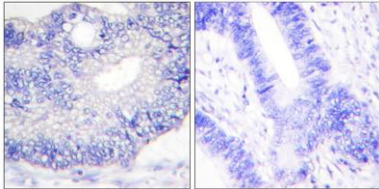
| | |
|--------------------------------|---|
| Clonality | Polyclonal |
| Concentration | 1 mg/ml |
| Observed band | 10kD |
| Human Gene ID | 7039 |
| Human Swiss-Prot Number | P01135 |
| Alternative Names | TGFA; Protransforming growth factor alpha |

Background

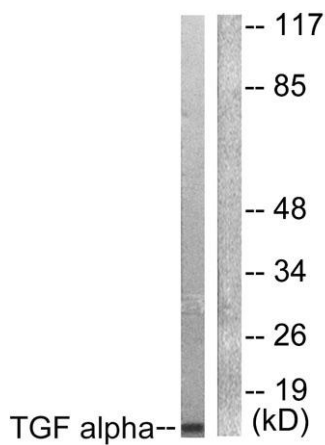
This gene encodes a growth factor that is a ligand for the epidermal growth factor receptor, which activates a signaling pathway for cell proliferation, differentiation and development. This protein may act as either a transmembrane-bound ligand or a soluble ligand. This gene has been associated with many types of cancers, and it may also be involved in some cases of cleft lip/palate. Alternatively spliced transcript variants encoding different isoforms have been found for this gene. [provided by RefSeq, Sep 2011],



Western Blot analysis of various cells using TGF α Polyclonal Antibody



Immunohistochemistry analysis of paraffin-embedded human colon carcinoma tissue, using TGF alpha Antibody. The picture on the right is blocked with the synthesized peptide.



Western blot analysis of lysates from COS7 cells, using TGF alpha Antibody. The lane on the right is blocked with the synthesized peptide.