

Synphilin-1 rabbit pAb**Cat#: orb766411 (Manual)**

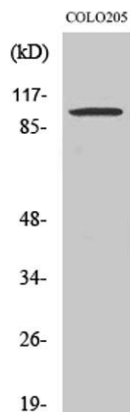
For research use only. Not intended for diagnostic use.

Product Name	Synphilin-1 rabbit pAb
Host species	Rabbit
Applications	WB;IHC;IF;ELISA
Species Cross-Reactivity	Human;Mouse
Recommended dilutions	Western Blot: 1/500 - 1/2000. Immunohistochemistry: 1/100 - 1/300. ELISA: 1/10000. Not yet tested in other applications.
Immunogen	The antiserum was produced against synthesized peptide derived from human Synphilin-1. AA range:797-846
Specificity	Synphilin-1 Polyclonal Antibody detects endogenous levels of Synphilin-1 protein.
Formulation	Liquid in PBS containing 50% glycerol, 0.5% BSA and 0.02% sodium azide..
Storage	Store at -20°C. Avoid repeated freeze-thaw cycles.
Protein Name	Synphilin-1
Gene Name	SNCAIP
Cellular localization	Cytoplasm . Detected in cytoplasmic inclusion bodies, together with SNCA.
Purification	The antibody was affinity-purified from rabbit antiserum by affinity-chromatography using epitope-specific immunogen.
Clonality	Polyclonal

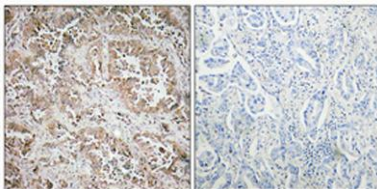
Concentration	1 mg/ml
Observed band	100kD
Human Gene ID	9627
Human Swiss-Prot Number	Q9Y6H5
Alternative Names	SNCAIP; Synphilin-1; Sph1; Alpha-synuclein-interacting protein

Background

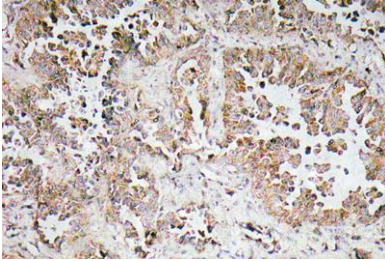
This gene encodes a protein containing several protein-protein interaction domains, including ankyrin-like repeats, a coiled-coil domain, and an ATP/GTP-binding motif. The encoded protein interacts with alpha-synuclein in neuronal tissue and may play a role in the formation of cytoplasmic inclusions and neurodegeneration. A mutation in this gene has been associated with Parkinson's disease. Alternative splicing results in multiple transcript variants. [provided by RefSeq, Apr 2015],



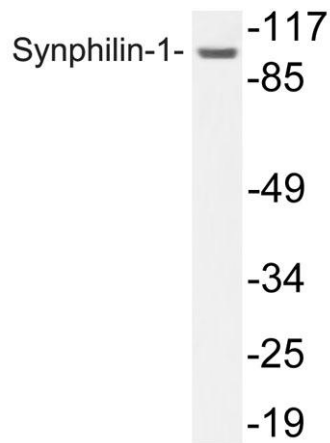
Western Blot analysis of various cells using Synphilin-1 Polyclonal Antibody



Immunohistochemical analysis of paraffin-embedded Human lung cancer. Antibody was diluted at 1:100(4° overnight). High-pressure and temperature Tris-EDTA,pH8.0 was used for antigen retrieval. Negative control (right) obtained from antibody was pre-absorbed by immunogen peptide.



Immunohistochemistry analysis of Synphilin-1 antibody in paraffin-embedded lung carcinoma tissue.



Western blot analysis of lysate from COLO205, using Synphilin-1 antibody.