

Synaptotagmin XI rabbit pAb**Cat#: orb766409 (Manual)**

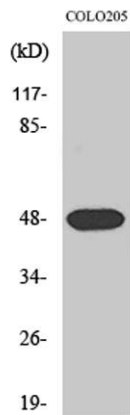
For research use only. Not intended for diagnostic use.

Product Name	Synaptotagmin XI rabbit pAb
Host species	Rabbit
Applications	WB;ELISA
Species Cross-Reactivity	Human;Mouse;Rat
Recommended dilutions	Western Blot: 1/500 - 1/2000. ELISA: 1/10000. Not yet tested in other applications.
Immunogen	The antiserum was produced against synthesized peptide derived from human SYT11. AA range:181-230
Specificity	Synaptotagmin XI Polyclonal Antibody detects endogenous levels of Synaptotagmin XI protein.
Formulation	Liquid in PBS containing 50% glycerol, 0.5% BSA and 0.02% sodium azide..
Storage	Store at -20°C. Avoid repeated freeze-thaw cycles.
Protein Name	Synaptotagmin-11
Gene Name	SYT11
Cellular localization	Cytoplasmic vesicle membrane ; Single-pass membrane protein . Perikaryon . Golgi apparatus, trans-Golgi network membrane ; Single-pass membrane protein . Recycling endosome membrane ; Single-pass membrane protein . Lysosome membrane ; Single-pass membrane
Purification	The antibody was affinity-purified from rabbit antiserum by affinity-chromatography using epitope-specific immunogen.

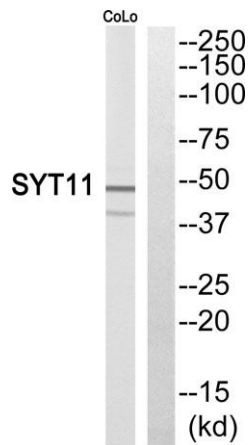
Clonality	Polyclonal
Concentration	1 mg/ml
Observed band	48kD
Human Gene ID	23208
Human Swiss-Prot Number	Q9BT88
Alternative Names	SYT11; KIAA0080; Synaptotagmin-11; Synaptotagmin XI; SytXI

Background

synaptotagmin 11(SYT11) Homo sapiens This gene is a member of the synaptotagmin gene family and encodes a protein similar to other family members that are known calcium sensors and mediate calcium-dependent regulation of membrane trafficking in synaptic transmission. The encoded protein is also a substrate for ubiquitin-E3-ligase parkin. The gene has previously been referred to as synaptotagmin XII but has been renamed synaptotagmin XI to be consistent with mouse and rat official nomenclature. [provided by RefSeq, Apr 2010],



Western Blot analysis of various cells using Synaptotagmin XI Polyclonal Antibody



Western blot analysis of SYT11 Antibody. The lane on the right is blocked with the SYT11 peptide.