

**Stat2 rabbit pAb****Cat#: orb766385 (Manual)**

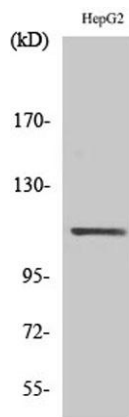
For research use only. Not intended for diagnostic use.

<b>Product Name</b>	Stat2 rabbit pAb
<b>Host species</b>	Rabbit
<b>Applications</b>	WB;IP;IHC;IF;ELISA
<b>Species Cross-Reactivity</b>	Human;Mouse;Rat
<b>Recommended dilutions</b>	Western Blot: 1/500 - 1/2000. Immunohistochemistry: 1/100 - 1/300. ELISA: 1/5000. Not yet tested in other applications.
<b>Immunogen</b>	The antiserum was produced against synthesized peptide derived from human STAT2. AA range:656-705
<b>Specificity</b>	Stat2 Polyclonal Antibody detects endogenous levels of Stat2 protein.
<b>Formulation</b>	Liquid in PBS containing 50% glycerol, 0.5% BSA and 0.02% sodium azide..
<b>Storage</b>	Store at -20°C. Avoid repeated freeze-thaw cycles.
<b>Protein Name</b>	Signal transducer and activator of transcription 2
<b>Gene Name</b>	STAT2
<b>Cellular localization</b>	Cytoplasm . Nucleus . Translocated into the nucleus upon activation by IFN-alpha/beta. .
<b>Purification</b>	The antibody was affinity-purified from rabbit antiserum by affinity-chromatography using epitope-specific immunogen.
<b>Clonality</b>	Polyclonal

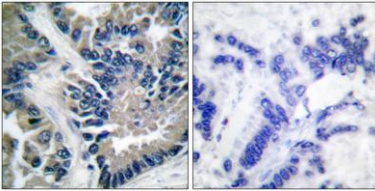
<b>Concentration</b>	1 mg/ml
<b>Observed band</b>	113kD
<b>Human Gene ID</b>	6773
<b>Human Swiss-Prot Number</b>	P52630
<b>Alternative Names</b>	STAT2; Signal transducer and activator of transcription 2; p113

**Background**

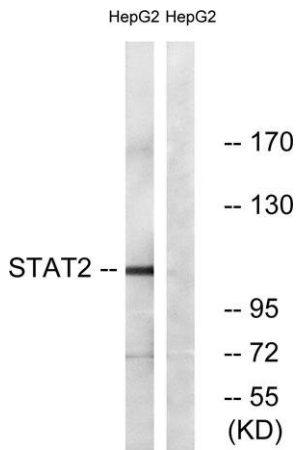
The protein encoded by this gene is a member of the STAT protein family. In response to cytokines and growth factors, STAT family members are phosphorylated by the receptor associated kinases, and then form homo- or heterodimers that translocate to the cell nucleus where they act as transcription activators. In response to interferon (IFN), this protein forms a complex with STAT1 and IFN regulatory factor family protein p48 (ISGF3G), in which this protein acts as a transactivator, but lacks the ability to bind DNA directly. Transcription adaptor P300/CBP (EP300/CREBBP) has been shown to interact specifically with this protein, which is thought to be involved in the process of blocking IFN-alpha response by adenovirus. Multiple transcript variants encoding different isoforms have been found for this gene. [provided by RefSeq, Mar 2010],



**Western Blot analysis of various cells using Stat2 Polyclonal Antibody**



Immunohistochemistry analysis of paraffin-embedded human lung carcinoma tissue, using STAT2 Antibody. The picture on the right is blocked with the synthesized peptide.



Western blot analysis of lysates from HepG2, using STAT2 Antibody. The lane on the right is blocked with the synthesized peptide.