

SR-1F rabbit pAb**Cat#: orb766366 (Manual)**

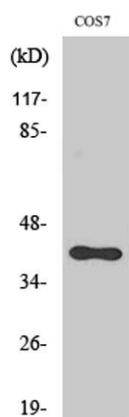
For research use only. Not intended for diagnostic use.

| | |
|---------------------------------|---|
| Product Name | SR-1F rabbit pAb |
| Host species | Rabbit |
| Applications | WB;ELISA;IHC |
| Species Cross-Reactivity | Human;Mouse;Rat;Monkey |
| Recommended dilutions | WB 1:500-2000;IHC-p 1:50-300; ELISA 2000-20000 |
| Immunogen | The antiserum was produced against synthesized peptide derived from human 5-HT-1F. AA range:101-150 |
| Specificity | SR-1F Polyclonal Antibody detects endogenous levels of SR-1F protein. |
| Formulation | Liquid in PBS containing 50% glycerol, 0.5% BSA and 0.02% sodium azide.. |
| Storage | Store at -20°C. Avoid repeated freeze-thaw cycles. |
| Protein Name | 5-hydroxytryptamine receptor 1F |
| Gene Name | HTR1F |
| Cellular localization | Cell membrane ; Multi-pass membrane protein . |
| Purification | The antibody was affinity-purified from rabbit antiserum by affinity-chromatography using epitope-specific immunogen. |
| Clonality | Polyclonal |

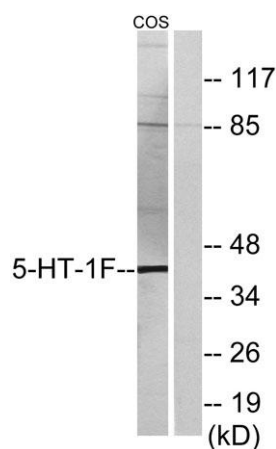
| | |
|--------------------------------|--|
| Concentration | 1 mg/ml |
| Observed band | 38kD |
| Human Gene ID | 3355 |
| Human Swiss-Prot Number | P30939 |
| Alternative Names | HTR1F; HTR1EL; 5-hydroxytryptamine receptor 1F; 5-HT-1F; 5-HT1F; Serotonin receptor 1F |

Background

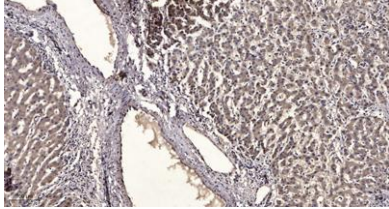
function: This is one of the several different receptors for 5-hydroxytryptamine (serotonin), a biogenic hormone that functions as a neurotransmitter, a hormone, and a mitogen. The activity of this receptor is mediated by G proteins that inhibit adenylate cyclase activity., similarity: Belongs to the G-protein coupled receptor 1 family.,



Western Blot analysis of various cells using SR-1F Polyclonal Antibody diluted at 1:1000



Western blot analysis of lysates from COS7 cells, using 5-HT-1F Antibody. The lane on the right is blocked with the synthesized peptide.



Immunohistochemical analysis of paraffin-embedded human liver cancer. 1, Antibody was diluted at 1:200(4° overnight). 2, Tris-EDTA,pH9.0 was used for antigen retrieval. 3,Secondary antibody was diluted at 1:200(room temperature, 45min).