

SR-1E rabbit pAb**Cat#: orb766365 (Manual)**

For research use only. Not intended for diagnostic use.

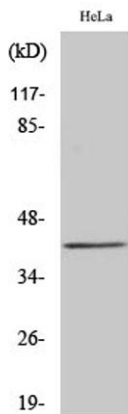
Product Name	SR-1E rabbit pAb
Host species	Rabbit
Applications	IF;ELISA;IHC
Species Cross-Reactivity	Human;Rat;Mouse;
Recommended dilutions	IF/ICC 1:50-300; ELISA 1:2000-20000; IHC-p 1:50-200
Immunogen	The antiserum was produced against synthesized peptide derived from human 5-HT-1E. AA range:101-150
Specificity	SR-1E Polyclonal Antibody detects endogenous levels of SR-1E protein.
Formulation	Liquid in PBS containing 50% glycerol, 0.5% BSA and 0.02% sodium azide..
Storage	Store at -20°C. Avoid repeated freeze-thaw cycles.
Protein Name	5-hydroxytryptamine receptor 1E
Gene Name	HTR1E
Cellular localization	Cell membrane ; Multi-pass membrane protein .
Purification	The antibody was affinity-purified from rabbit antiserum by affinity-chromatography using epitope-specific immunogen.
Clonality	Polyclonal

Explore. Bioreagents.

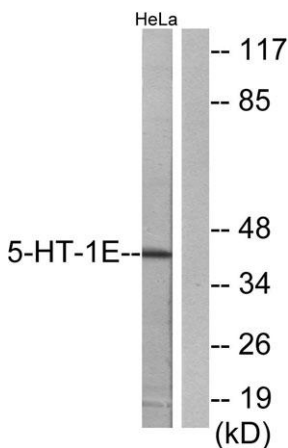
Concentration	1 mg/ml
Observed band	42kD
Human Gene ID	3354
Human Swiss-Prot Number	P28566
Alternative Names	HTR1E; 5-hydroxytryptamine receptor 1E; 5-HT-1E; 5-HT1E; S31; Serotonin receptor 1E

Background

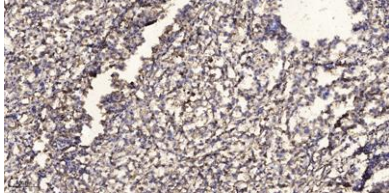
function: This is one of the several different receptors for 5-hydroxytryptamine (serotonin), a biogenic hormone that functions as a neurotransmitter, a hormone, and a mitogen. The activity of this receptor is mediated by G proteins that inhibit adenylate cyclase activity., similarity: Belongs to the G-protein coupled receptor 1 family.,



Western Blot analysis of various cells using SR-1E Polyclonal Antibody



Western blot analysis of lysates from HeLa cells, using 5-HT-1E Antibody. The lane on the right is blocked with the synthesized peptide.



Immunohistochemical analysis of paraffin-embedded human Squamous cell carcinoma of lung. 1, Antibody was diluted at 1:200(4° overnight). 2, Tris-EDTA,pH9.0 was used for antigen retrieval. 3,Secondary antibody was diluted at 1:200(room temperature, 45min).