

SR-1A rabbit pAb**Cat#: orb766364 (Manual)**

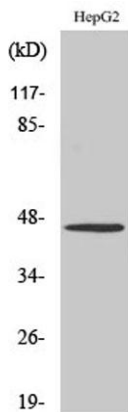
For research use only. Not intended for diagnostic use.

Product Name	SR-1A rabbit pAb
Host species	Rabbit
Applications	WB;IHC;IF;ELISA
Species Cross-Reactivity	Human;Mouse;Rat
Recommended dilutions	Western Blot: 1/500 - 1/2000. Immunohistochemistry: 1/100 - 1/300. Immunofluorescence: 1/200 - 1/1000. ELISA: 1/20000. Not yet tested in other applications.
Immunogen	The antiserum was produced against synthesized peptide derived from human 5-HT-1A. AA range:291-340
Specificity	SR-1A Polyclonal Antibody detects endogenous levels of SR-1A protein.
Formulation	Liquid in PBS containing 50% glycerol, 0.5% BSA and 0.02% sodium azide..
Storage	Store at -20°C. Avoid repeated freeze-thaw cycles.
Protein Name	5-hydroxytryptamine receptor 1A
Gene Name	HTR1A
Cellular localization	Cell membrane ; Multi-pass membrane protein . Cell projection, dendrite .
Purification	The antibody was affinity-purified from rabbit antiserum by affinity-chromatography using epitope-specific immunogen.
Clonality	Polyclonal

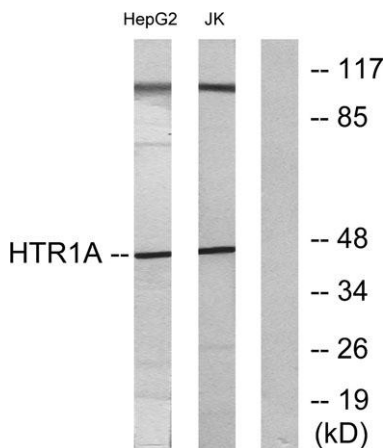
Concentration	1 mg/ml
Observed band	46kD
Human Gene ID	3350
Human Swiss-Prot Number	P08908
Alternative Names	HTR1A; ADRB2RL1; ADRBRL1; 5-hydroxytryptamine receptor 1A; 5-HT-1A; 5-HT1A; G-21; Serotonin receptor 1A

Background

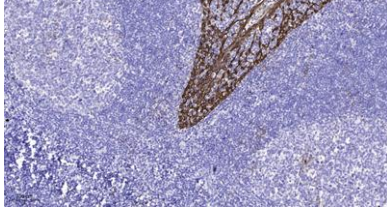
This gene encodes a G protein-coupled receptor for 5-hydroxytryptamine (serotonin), and belongs to the 5-hydroxytryptamine receptor subfamily. Serotonin has been implicated in a number of physiologic processes and pathologic conditions. Inactivation of this gene in mice results in behavior consistent with an increased anxiety and stress response. Mutation in the promoter of this gene has been associated with menstrual cycle-dependent periodic fevers. [provided by RefSeq, Jun 2012],



Western Blot analysis of various cells using SR-1A Polyclonal Antibody diluted at 1:500



Western blot analysis of lysates from HepG2 and Jurkat cells, using 5-HT-1A Antibody. The lane on the right is blocked with the synthesized peptide.



Immunohistochemical analysis of paraffin-embedded human tonsil. 1, Antibody was diluted at 1:200(4° overnight). 2, Tris-EDTA,pH9.0 was used for antigen retrieval. 3,Secondary antibody was diluted at 1:200(room temperature, 45min).