

Snk rabbit pAb**Cat#: orb766347 (Manual)**

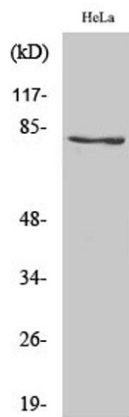
For research use only. Not intended for diagnostic use.

Product Name	Snk rabbit pAb
Host species	Rabbit
Applications	WB;IF;ELISA;IHC
Species Cross-Reactivity	Human;Mouse;Rat
Recommended dilutions	WB 1:500-2000; IF/ICC 1:50-200;ELISA 1:2000-20000;IHC-p 1:50-200
Immunogen	The antiserum was produced against synthesized peptide derived from human PLK2. AA range:291-340
Specificity	Snk Polyclonal Antibody detects endogenous levels of Snk protein.
Formulation	Liquid in PBS containing 50% glycerol, 0.5% BSA and 0.02% sodium azide..
Storage	Store at -20°C. Avoid repeated freeze-thaw cycles.
Protein Name	Serine/threonine-protein kinase PLK2
Gene Name	PLK2
Cellular localization	Cytoplasm, cytoskeleton, microtubule organizing center, centrosome, centriole . Cell projection, dendrite . Localizes to centrosomes during early G1 phase where it only associates to the mother centriole and then distributes equally to both mother and daughter centrioles at the onset of S phase.
Purification	The antibody was affinity-purified from rabbit antiserum by affinity-chromatography using epitope-specific immunogen.

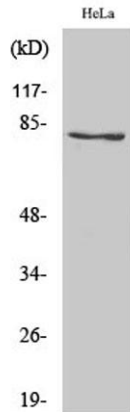
Clonality	Polyclonal
Concentration	1 mg/ml
Observed band	78kD
Human Gene ID	10769
Human Swiss-Prot Number	Q9NYY3
Alternative Names	PLK2; SNK; Serine/threonine-protein kinase PLK2; Polo-like kinase 2; PLK-2; hPlk2; Serine/threonine-protein kinase SNK; hSNK; Serum-inducible kinase

Background

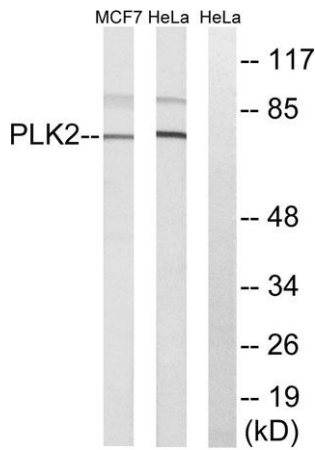
The protein encoded by this gene is a member of the polo family of serine/threonine protein kinases that have a role in normal cell division. This gene is most abundantly expressed in testis, spleen and fetal tissues, and its expression is inducible by serum, suggesting that it may also play an important role in cells undergoing rapid cell division. Alternatively spliced transcript variants encoding different isoforms have been found for this gene. [provided by RefSeq, Nov 2011],



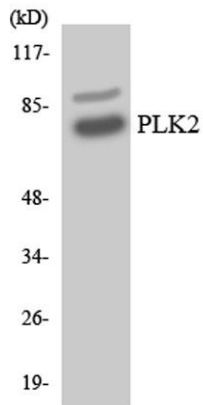
Western Blot analysis of various cells using Snk Polyclonal Antibody



Western Blot analysis of MCF7 cells using Snk Polyclonal Antibody



Western blot analysis of lysates from HeLa and MCF-7 cells, using PLK2 Antibody. The lane on the right is blocked with the synthesized peptide.



Western blot analysis of the lysates from HeLa cells using PLK2 antibody.