

**Siah-1/2 rabbit pAb****Cat#: orb766317 (Manual)**

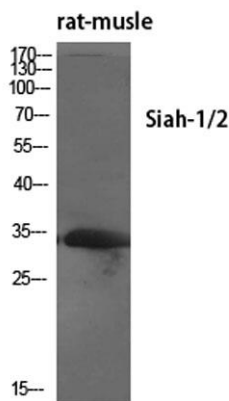
For research use only. Not intended for diagnostic use.

<b>Product Name</b>	Siah-1/2 rabbit pAb
<b>Host species</b>	Rabbit
<b>Applications</b>	WB;IHC;IF;ELISA
<b>Species Cross-Reactivity</b>	Human;Mouse;Rat
<b>Recommended dilutions</b>	Western Blot: 1/500 - 1/2000. Immunohistochemistry: 1/100 - 1/300. Immunofluorescence: 1/200 - 1/1000. ELISA: 1/10000. Not yet tested in other applications.
<b>Immunogen</b>	The antiserum was produced against synthesized peptide derived from human SIAH1. AA range:181-230
<b>Specificity</b>	Siah-1/2 Polyclonal Antibody detects endogenous levels of Siah-1/2 protein.
<b>Formulation</b>	Liquid in PBS containing 50% glycerol, 0.5% BSA and 0.02% sodium azide..
<b>Storage</b>	Store at -20°C. Avoid repeated freeze-thaw cycles.
<b>Protein Name</b>	E3 ubiquitin-protein ligase SIAH1/2
<b>Gene Name</b>	SIAH1/SIAH2
<b>Cellular localization</b>	Cytoplasm. Nucleus. Predominantly cytoplasmic. Partially nuclear.
<b>Purification</b>	The antibody was affinity-purified from rabbit antiserum by affinity-chromatography using epitope-specific immunogen.
<b>Clonality</b>	Polyclonal

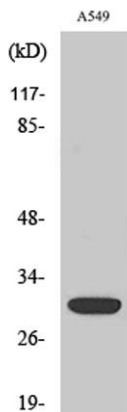
<b>Concentration</b>	1 mg/ml
<b>Observed band</b>	34kD
<b>Human Gene ID</b>	6477/6478
<b>Human Swiss-Prot Number</b>	Q8IUQ4/O43255
<b>Alternative Names</b>	SIAH1; HUMSIAH; E3 ubiquitin-protein ligase SIAH1; Seven in absentia homolog 1; Siah-1; Siah-1a; SIAH2; E3 ubiquitin-protein ligase SIAH2; Seven in absentia homolog 2; Siah-2; hSiah2

## Background

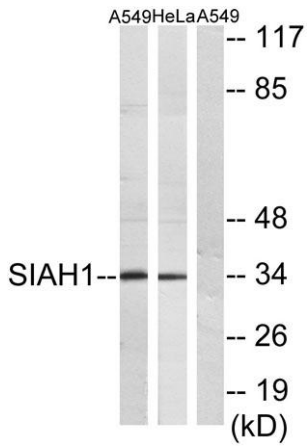
This gene encodes a protein that is a member of the seven in absentia homolog (SIAH) family. The protein is an E3 ligase and is involved in ubiquitination and proteasome-mediated degradation of specific proteins. The activity of this ubiquitin ligase has been implicated in the development of certain forms of Parkinson's disease, the regulation of the cellular response to hypoxia and induction of apoptosis. Alternative splicing results in several additional transcript variants, some encoding different isoforms and others that have not been fully characterized. [provided by RefSeq, Jul 2008],



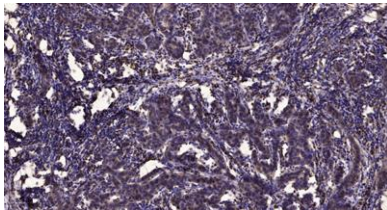
Western Blot analysis of various cells using Siah-1/2 Polyclonal Antibody diluted at 1:500



Western Blot analysis of HeLa cells using Siah-1/2 Polyclonal Antibody diluted at 1:500



**Western blot analysis of lysates from A549 and HeLa cells, using SIAH1 Antibody. The lane on the right is blocked with the synthesized peptide.**



**Immunohistochemical analysis of paraffin-embedded human Breast cancer. 1, Antibody was diluted at 1:200(4° overnight). 2, Tris-EDTA,pH9.0 was used for antigen retrieval. 3,Secondary antibody was diluted at 1:200(room temperature, 45min).**