

**RXR $\gamma$  rabbit pAb****Cat#: orb766276 (Manual)**

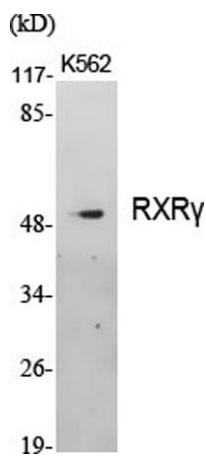
For research use only. Not intended for diagnostic use.

<b>Product Name</b>	RXR $\gamma$ rabbit pAb
<b>Host species</b>	Rabbit
<b>Applications</b>	WB;IHC;IF;ELISA
<b>Species Cross-Reactivity</b>	Human;Mouse
<b>Recommended dilutions</b>	Western Blot: 1/500 - 1/2000. Immunohistochemistry: 1/100 - 1/300. Immunofluorescence: 1/200 - 1/1000. ELISA: 1/10000. Not yet tested in other applications.
<b>Immunogen</b>	The antiserum was produced against synthesized peptide derived from human Retinoid X Receptor gamma. AA range:171-220
<b>Specificity</b>	RXR $\gamma$ Polyclonal Antibody detects endogenous levels of RXR $\gamma$ protein.
<b>Formulation</b>	Liquid in PBS containing 50% glycerol, 0.5% BSA and 0.02% sodium azide..
<b>Storage</b>	Store at -20°C. Avoid repeated freeze-thaw cycles.
<b>Protein Name</b>	Retinoic acid receptor RXR-gamma
<b>Gene Name</b>	RXRG
<b>Cellular localization</b>	Nucleus . Cytoplasm .
<b>Purification</b>	The antibody was affinity-purified from rabbit antiserum by affinity-chromatography using epitope-specific immunogen.
<b>Clonality</b>	Polyclonal

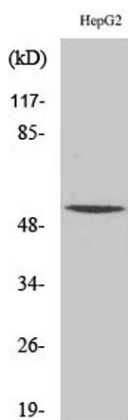
<b>Concentration</b>	1 mg/ml
<b>Observed band</b>	50kD
<b>Human Gene ID</b>	6258
<b>Human Swiss-Prot Number</b>	P48443
<b>Alternative Names</b>	RXRG; NR2B3; Retinoic acid receptor RXR-gamma; Nuclear receptor subfamily 2 group B member 3; Retinoid X receptor gamma

**Background**

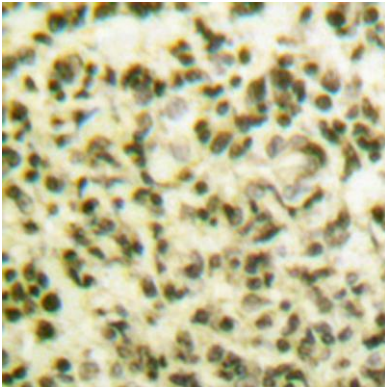
retinoid X receptor gamma(RXRG) Homo sapiens This gene encodes a member of the retinoid X receptor (RXR) family of nuclear receptors which are involved in mediating the antiproliferative effects of retinoic acid (RA). This receptor forms dimers with the retinoic acid, thyroid hormone, and vitamin D receptors, increasing both DNA binding and transcriptional function on their respective response elements. This gene is expressed at significantly lower levels in non-small cell lung cancer cells. Alternatively spliced transcript variants have been described. [provided by RefSeq, Jun 2010],



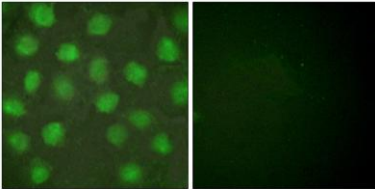
**Western Blot analysis of various cells using RXR $\gamma$  Polyclonal Antibody cells nucleus extracted by Minute TM Cytoplasmic and Nuclear Fractionation kit (SC-003, Inventbiotech, MN, USA).**



**Western Blot analysis of HepG2 cells using RXR $\gamma$  Polyclonal Antibody cells nucleus extracted by Minute TM Cytoplasmic and Nuclear Fractionation kit (SC-003, Inventbiotech, MN, USA).**



**Immunohistochemical analysis of paraffin-embedded Human lung cancer. Antibody was diluted at 1:100(4° overnight). High-pressure and temperature Tris-EDTA,pH8.0 was used for antigen retrieval.**



**Immunofluorescence analysis of HUVEC cells, using Retinoid X Receptor gamma Antibody. The picture on the right is blocked with the synthesized peptide.**