

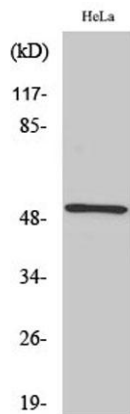
**RSAD1 rabbit pAb****Cat#: orb766270 (Manual)**

For research use only. Not intended for diagnostic use.

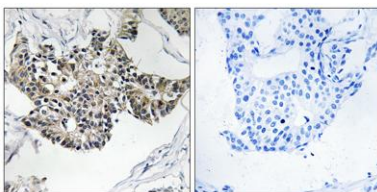
<b>Product Name</b>	RSAD1 rabbit pAb
<b>Host species</b>	Rabbit
<b>Applications</b>	WB;IHC;IF;ELISA
<b>Species Cross-Reactivity</b>	Human;Mouse
<b>Recommended dilutions</b>	Western Blot: 1/500 - 1/2000. Immunohistochemistry: 1/100 - 1/300. ELISA: 1/5000. Not yet tested in other applications.
<b>Immunogen</b>	The antiserum was produced against synthesized peptide derived from human RSAD1. AA range:298-347
<b>Specificity</b>	RSAD1 Polyclonal Antibody detects endogenous levels of RSAD1 protein.
<b>Formulation</b>	Liquid in PBS containing 50% glycerol, 0.5% BSA and 0.02% sodium azide..
<b>Storage</b>	Store at -20°C. Avoid repeated freeze-thaw cycles.
<b>Protein Name</b>	Radical S-adenosyl methionine domain-containing protein 1 mitochondrial
<b>Gene Name</b>	RSAD1
<b>Cellular localization</b>	Mitochondrion .
<b>Purification</b>	The antibody was affinity-purified from rabbit antiserum by affinity-chromatography using epitope-specific immunogen.
<b>Clonality</b>	Polyclonal

<b>Concentration</b>	1 mg/ml
<b>Observed band</b>	52kD
<b>Human Gene ID</b>	55316
<b>Human Swiss-Prot Number</b>	Q9HA92
<b>Alternative Names</b>	RSAD1; Radical S-adenosyl methionine domain-containing protein 1; mitochondrial; Oxygen-independent coproporphyrinogen-III oxidase-like protein RSAD1

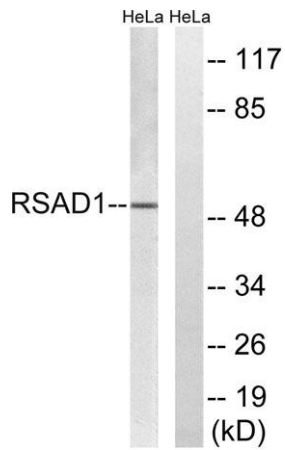
**Background** cofactor: Binds 1 4Fe-4S cluster. The cluster is coordinated with 3 cysteines and an exchangeable S-adenosyl-L-methionine. function: May be involved in porphyrin cofactor biosynthesis. similarity: Belongs to the anaerobic coproporphyrinogen-III oxidase family.



Western Blot analysis of various cells using RSAD1 Polyclonal Antibody



Immunohistochemistry analysis of paraffin-embedded human breast carcinoma tissue, using RSAD1 Antibody. The picture on the right is blocked with the synthesized peptide.



**Western blot analysis of lysates from HeLa cells, using RSAD1 Antibody. The lane on the right is blocked with the synthesized peptide.**