

RRS1 rabbit pAb**Cat#: orb766269 (Manual)**

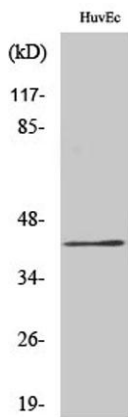
For research use only. Not intended for diagnostic use.

Product Name	RRS1 rabbit pAb
Host species	Rabbit
Applications	WB;IHC;IF;ELISA
Species Cross-Reactivity	Human;Mouse;Rat
Recommended dilutions	Western Blot: 1/500 - 1/2000. Immunohistochemistry: 1/100 - 1/300. ELISA: 1/10000. Not yet tested in other applications.
Immunogen	The antiserum was produced against synthesized peptide derived from human RRS1. AA range:254-303
Specificity	RRS1 Polyclonal Antibody detects endogenous levels of RRS1 protein.
Formulation	Liquid in PBS containing 50% glycerol, 0.5% BSA and 0.02% sodium azide..
Storage	Store at -20°C. Avoid repeated freeze-thaw cycles.
Protein Name	Ribosome biogenesis regulatory protein homolog
Gene Name	RRS1
Cellular localization	Nucleus, nucleolus .
Purification	The antibody was affinity-purified from rabbit antiserum by affinity-chromatography using epitope-specific immunogen.
Clonality	Polyclonal

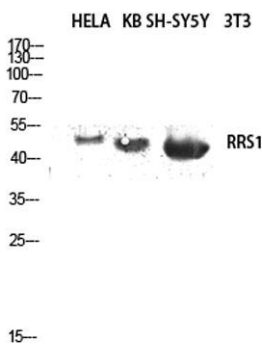
Explore. Bioreagents.

Concentration	1 mg/ml
Observed band	41kD
Human Gene ID	23212
Human Swiss-Prot Number	Q15050
Alternative Names	RRS1; KIAA0112; RRR; Ribosome biogenesis regulatory protein homolog

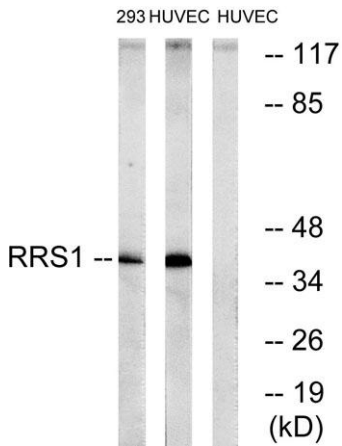
Background function:Involved in ribosome biogenesis.,similarity:Belongs to the RRS1 family.,



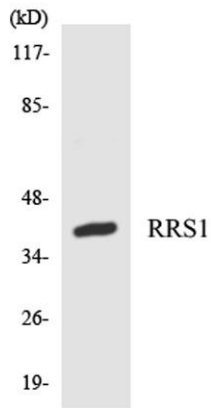
Western Blot analysis of various cells using RRS1 Polyclonal Antibody diluted at 1:2000 cells nucleus extracted by Minute TM Cytoplasmic and Nuclear Fractionation kit (SC-003, Inventbiotech, MN, USA).



Western blot analysis of HELA KB SH-SY5Y lysis using RRS1 antibody. Antibody was diluted at 1:2000 cells nucleus extracted by Minute TM Cytoplasmic and Nuclear Fractionation kit (SC-003, Inventbiotech, MN, USA).



Western blot analysis of lysates from HUVEC and 293 cells, using RRS1 Antibody. The lane on the right is blocked with the synthesized peptide.



Western blot analysis of the lysates from HT-29 cells using RRS1 antibody.