

**ROR $\alpha$  rabbit pAb****Cat#: orb766264 (Manual)**

For research use only. Not intended for diagnostic use.

<b>Product Name</b>	ROR $\alpha$ rabbit pAb
<b>Host species</b>	Rabbit
<b>Applications</b>	WB;IHC;IF;ELISA
<b>Species Cross-Reactivity</b>	Human;Monkey
<b>Recommended dilutions</b>	Western Blot: 1/500 - 1/2000. Immunohistochemistry: 1/100 - 1/300. Immunofluorescence: 1/200 - 1/1000. ELISA: 1/40000. Not yet tested in other applications.
<b>Immunogen</b>	The antiserum was produced against synthesized peptide derived from human RORA. AA range:6-55
<b>Specificity</b>	ROR $\alpha$ Polyclonal Antibody detects endogenous levels of ROR $\alpha$ protein.
<b>Formulation</b>	Liquid in PBS containing 50% glycerol, 0.5% BSA and 0.02% sodium azide..
<b>Storage</b>	Store at -20°C. Avoid repeated freeze-thaw cycles.
<b>Protein Name</b>	Nuclear receptor ROR-alpha
<b>Gene Name</b>	RORA
<b>Cellular localization</b>	Nucleus .
<b>Purification</b>	The antibody was affinity-purified from rabbit antiserum by affinity-chromatography using epitope-specific immunogen.
<b>Clonality</b>	Polyclonal

**Concentration** 1 mg/ml

**Observed band** 60kD

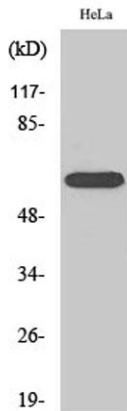
**Human Gene ID** 6095

**Human Swiss-Prot Number** P35398

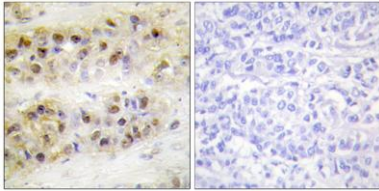
**Alternative Names** RORA; NR1F1; RZRA; Nuclear receptor ROR-alpha; Nuclear receptor RZR-alpha; Nuclear receptor subfamily 1 group F member 1; Retinoid-related orphan receptor-alpha

### Background

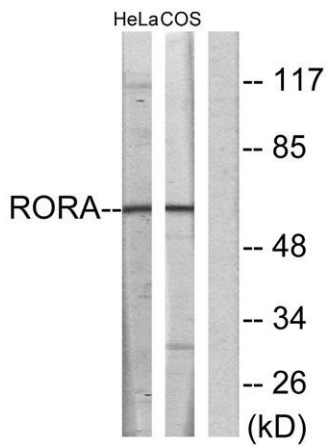
The protein encoded by this gene is a member of the NR1 subfamily of nuclear hormone receptors. It can bind as a monomer or as a homodimer to hormone response elements upstream of several genes to enhance the expression of those genes. The encoded protein has been shown to interact with NM23-2, a nucleoside diphosphate kinase involved in organogenesis and differentiation, as well as with NM23-1, the product of a tumor metastasis suppressor candidate gene. Also, it has been shown to aid in the transcriptional regulation of some genes involved in circadian rhythm. Four transcript variants encoding different isoforms have been described for this gene. [provided by RefSeq, Feb 2014],



**Western Blot analysis of various cells using ROR $\alpha$  Polyclonal Antibody cells nucleus extracted by Minute TM Cytoplasmic and Nuclear Fractionation kit (SC-003, Inventbiotech, MN, USA).**



**Immunohistochemistry analysis of paraffin-embedded human breast carcinoma tissue, using RORA Antibody. The picture on the right is blocked with the synthesized peptide.**



**Western blot analysis of lysates from HeLa and COS7 cells, using RORA Antibody. The lane on the right is blocked with the synthesized peptide.**