

RKIP rabbit pAb**Cat#: orb766259 (Manual)**

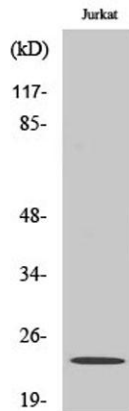
For research use only. Not intended for diagnostic use.

Product Name	RKIP rabbit pAb
Host species	Rabbit
Applications	WB;IHC;IF;ELISA
Species Cross-Reactivity	Human;Rat;Mouse;
Recommended dilutions	Western Blot: 1/500 - 1/2000. ELISA: 1/5000. Not yet tested in other applications.
Immunogen	The antiserum was produced against synthesized peptide derived from human PEBP1. AA range:105-154
Specificity	RKIP Polyclonal Antibody detects endogenous levels of RKIP protein.
Formulation	Liquid in PBS containing 50% glycerol, 0.5% BSA and 0.02% sodium azide..
Storage	Store at -20°C. Avoid repeated freeze-thaw cycles.
Protein Name	Phosphatidylethanolamine-binding protein 1
Gene Name	PEBP1
Cellular localization	Cytoplasm .
Purification	The antibody was affinity-purified from rabbit antiserum by affinity-chromatography using epitope-specific immunogen.
Clonality	Polyclonal

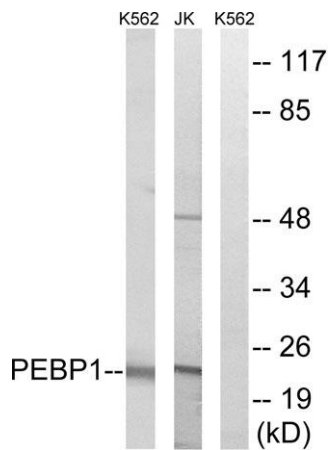
Concentration	1 mg/ml
Observed band	23kD
Human Gene ID	5037
Human Swiss-Prot Number	P30086
Alternative Names	PEBP1; PBP; PEBP; Phosphatidylethanolamine-binding protein 1; PEBP-1; HCNPPp; Neuropolypeptide h3; Prostatic-binding protein; Raf kinase inhibitor protein; RKIP

Background

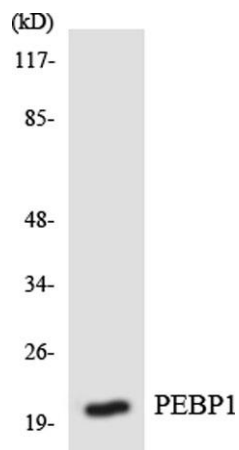
This gene encodes a member of the phosphatidylethanolamine-binding family of proteins and has been shown to modulate multiple signaling pathways, including the MAP kinase (MAPK), NF-kappa B, and glycogen synthase kinase-3 (GSK-3) signaling pathways. The encoded protein can be further processed to form a smaller cleavage product, hippocampal cholinergic neurostimulating peptide (HCNP), which may be involved in neural development. This gene has been implicated in numerous human cancers and may act as a metastasis suppressor gene. Multiple pseudogenes of this gene have been identified in the genome. [provided by RefSeq, Jul 2015],



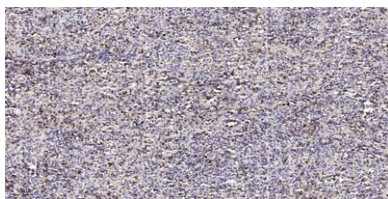
Western Blot analysis of various cells using RKIP Polyclonal Antibody



Western blot analysis of lysates from Jurkat and K562 cells, using PEBP1 Antibody. The lane on the right is blocked with the synthesized peptide.



Western blot analysis of the lysates from HepG2 cells using PEBP1 antibody.



Immunohistochemical analysis of paraffin-embedded human spleen tissue. 1,primary Antibody was diluted at 1:200(4° overnight). 2, Sodium citrate pH 6.0 was used for antigen retrieval(>98°C,20min). 3,Secondary antibody was diluted at 1:200(room temperature, 30min) Negtive control was used by secondary antibody only.)