

Ribosomal Protein S8 rabbit pAb**Cat#: orb766253 (Manual)**

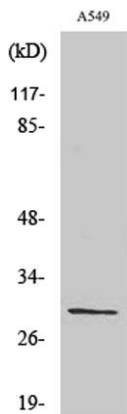
For research use only. Not intended for diagnostic use.

Product Name	Ribosomal Protein S8 rabbit pAb
Host species	Rabbit
Applications	WB;IHC;IF;ELISA
Species Cross-Reactivity	Human;Mouse;Rat
Recommended dilutions	Western Blot: 1/500 - 1/2000. Immunohistochemistry: 1/100 - 1/300. ELISA: 1/20000. Not yet tested in other applications.
Immunogen	The antiserum was produced against synthesized peptide derived from human RPS8. AA range:111-160
Specificity	Ribosomal Protein S8 Polyclonal Antibody detects endogenous levels of Ribosomal Protein S8 protein.
Formulation	Liquid in PBS containing 50% glycerol, 0.5% BSA and 0.02% sodium azide..
Storage	Store at -20°C. Avoid repeated freeze-thaw cycles.
Protein Name	40S ribosomal protein S8
Gene Name	RPS8
Cellular localization	Cytoplasm . Membrane ; Lipid-anchor . Localized in cytoplasmic mRNP granules containing untranslated mRNAs.
Purification	The antibody was affinity-purified from rabbit antiserum by affinity-chromatography using epitope-specific immunogen.
Clonality	Polyclonal

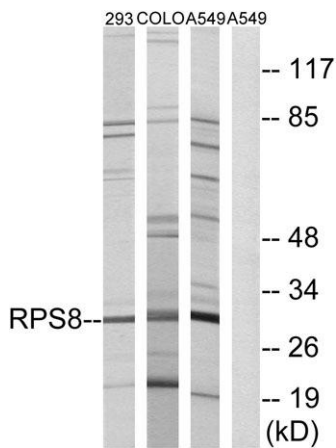
Concentration	1 mg/ml
Observed band	30kD
Human Gene ID	6202
Human Swiss-Prot Number	P62241
Alternative Names	RPS8; OK/SW-cl.83; 40S ribosomal protein S8

Background

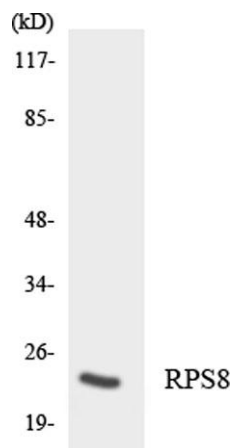
Ribosomes, the organelles that catalyze protein synthesis, consist of a small 40S subunit and a large 60S subunit. Together these subunits are composed of 4 RNA species and approximately 80 structurally distinct proteins. This gene encodes a ribosomal protein that is a component of the 40S subunit. The protein belongs to the S8E family of ribosomal proteins. It is located in the cytoplasm. Increased expression of this gene in colorectal tumors and colon polyps compared to matched normal colonic mucosa has been observed. This gene is co-transcribed with the small nucleolar RNA genes U38A, U38B, U39, and U40, which are located in its fourth, fifth, first, and second introns, respectively. As is typical for genes encoding ribosomal proteins, there are multiple processed pseudogenes of this gene dispersed through the genome. [provided by RefSeq, Jul 2008],



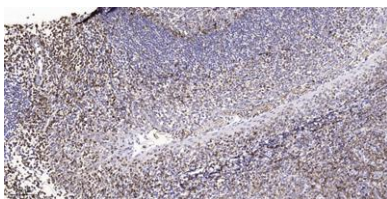
Western Blot analysis of various cells using Ribosomal Protein S8 Polyclonal Antibody diluted at 1:2000



Western blot analysis of lysates from A549, 293, and COLO cells, using RPS8 Antibody. The lane on the right is blocked with the synthesized peptide.



Western blot analysis of the lysates from Jurkat cells using RPS8 antibody.



Immunohistochemical analysis of paraffin-embedded human tonsil. 1, Tris-EDTA, pH 9.0 was used for antigen retrieval. 2 Antibody was diluted at 1:200 (4° overnight). 3, Secondary antibody was diluted at 1:200 (room temperature, 45 min).