

**Ribosomal Protein L18 rabbit pAb****Cat#: orb766234 (Manual)**

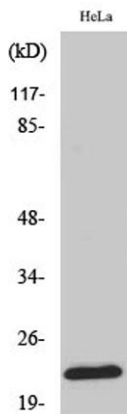
For research use only. Not intended for diagnostic use.

<b>Product Name</b>	Ribosomal Protein L18 rabbit pAb
<b>Host species</b>	Rabbit
<b>Applications</b>	WB;IHC;IF;ELISA
<b>Species Cross-Reactivity</b>	Human;Mouse;Rat
<b>Recommended dilutions</b>	Western Blot: 1/500 - 1/2000. Immunohistochemistry: 1/100 - 1/300. ELISA: 1/40000. Not yet tested in other applications.
<b>Immunogen</b>	The antiserum was produced against synthesized peptide derived from human RPL18. AA range:111-160
<b>Specificity</b>	Ribosomal Protein L18 Polyclonal Antibody detects endogenous levels of Ribosomal Protein L18 protein.
<b>Formulation</b>	Liquid in PBS containing 50% glycerol, 0.5% BSA and 0.02% sodium azide..
<b>Storage</b>	Store at -20°C. Avoid repeated freeze-thaw cycles.
<b>Protein Name</b>	60S ribosomal protein L18
<b>Gene Name</b>	RPL18
<b>Cellular localization</b>	Cytoplasm, cytosol . Cytoplasm . Rough endoplasmic reticulum . Detected on cytosolic polysomes (PubMed:25957688). Detected in ribosomes that are associated with the rough endoplasmic reticulum (By similarity). .
<b>Purification</b>	The antibody was affinity-purified from rabbit antiserum by affinity-chromatography using epitope-specific immunogen.

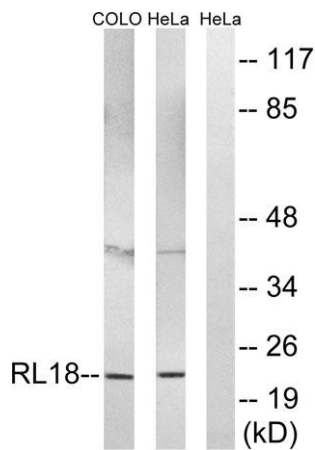
<b>Clonality</b>	Polyclonal
<b>Concentration</b>	1 mg/ml
<b>Observed band</b>	23kD
<b>Human Gene ID</b>	6141
<b>Human Swiss-Prot Number</b>	Q07020
<b>Alternative Names</b>	RPL18; 60S ribosomal protein L18

## Background

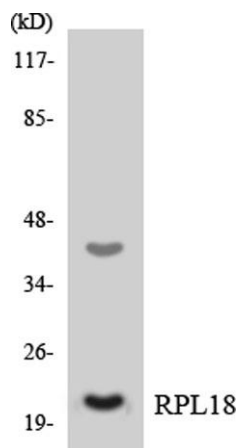
Ribosomes, the organelles that catalyze protein synthesis, consist of a small 40S subunit and a large 60S subunit. Together these subunits are composed of 4 RNA species and approximately 80 structurally distinct proteins. This gene encodes a member of the L18E family of ribosomal proteins that is a component of the 60S subunit. As is typical for genes encoding ribosomal proteins, there are multiple processed pseudogenes of this gene dispersed through the genome. Alternatively spliced transcript variants encoding multiple isoforms have been observed for this gene. [provided by RefSeq, Jul 2012],



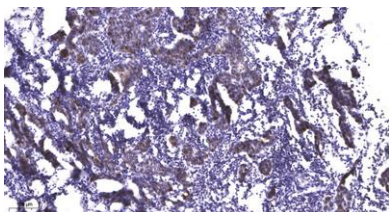
**Western Blot analysis of various cells using Ribosomal Protein L18 Polyclonal Antibody diluted at 1:2000**



Western blot analysis of lysates from HeLa and COLO cells, using RPL18 Antibody. The lane on the right is blocked with the synthesized peptide.



Western blot analysis of the lysates from HeLa cells using RPL18 antibody.



Immunohistochemical analysis of paraffin-embedded human Breast cancer. 1, Antibody was diluted at 1:200(4° overnight). 2, Tris-EDTA,pH9.0 was used for antigen retrieval. 3,Secondary antibody was diluted at 1:200(room temperature, 45min).