

**Ribosomal Protein L17 rabbit pAb****Cat#: orb766233 (Manual)**

For research use only. Not intended for diagnostic use.

<b>Product Name</b>	Ribosomal Protein L17 rabbit pAb
<b>Host species</b>	Rabbit
<b>Applications</b>	WB;IHC;IF;ELISA
<b>Species Cross-Reactivity</b>	Human;Mouse;Rat;Monkey;Cat
<b>Recommended dilutions</b>	Western Blot: 1/500 - 1/2000. Immunohistochemistry: 1/100 - 1/300. ELISA: 1/10000. Not yet tested in other applications.
<b>Immunogen</b>	The antiserum was produced against synthesized peptide derived from human RPL17. AA range:101-150
<b>Specificity</b>	Ribosomal Protein L17 Polyclonal Antibody detects endogenous levels of Ribosomal Protein L17 protein.
<b>Formulation</b>	Liquid in PBS containing 50% glycerol, 0.5% BSA and 0.02% sodium azide..
<b>Storage</b>	Store at -20°C. Avoid repeated freeze-thaw cycles.
<b>Protein Name</b>	60S ribosomal protein L17
<b>Gene Name</b>	RPL17
<b>Cellular localization</b>	nucleus,cytosol,large ribosomal subunit,cytosolic large ribosomal subunit,
<b>Purification</b>	The antibody was affinity-purified from rabbit antiserum by affinity-chromatography using epitope-specific immunogen.
<b>Clonality</b>	Polyclonal

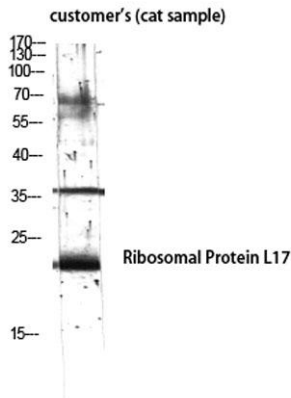
<b>Concentration</b>	1 mg/ml
<b>Observed band</b>	24kD
<b>Human Gene ID</b>	6139
<b>Human Swiss-Prot Number</b>	P18621
<b>Alternative Names</b>	RPL17; 60S ribosomal protein L17; 60S ribosomal protein L23; PD-1

## Background

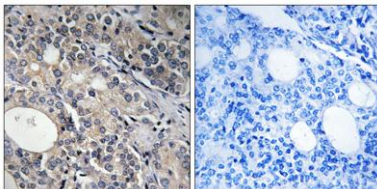
Ribosomes, the organelles that catalyze protein synthesis, consist of a small 40S subunit and a large 60S subunit. Together these subunits are composed of 4 RNA species and approximately 80 structurally distinct proteins. This gene encodes a ribosomal protein that is a component of the 60S subunit. The protein belongs to the L22P family of ribosomal proteins. It is located in the cytoplasm. This gene has been referred to as rpL23 because the encoded protein shares amino acid identity with ribosomal protein L23 from *Halobacterium marismortui*; however, its official symbol is RPL17. As is typical for genes encoding ribosomal proteins, there are multiple processed pseudogenes of this gene dispersed through the genome. Alternative splicing results in multiple transcript variants. Read-through transcription also exists between this gene and the neighboring downstream C18orf32 (chromosome 18 open reading f



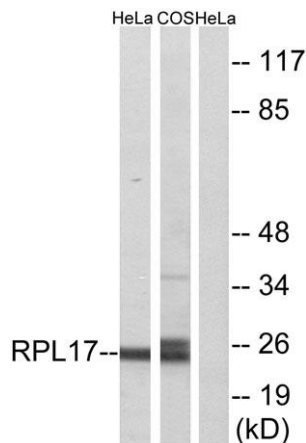
**Western Blot analysis of various cells using Ribosomal Protein L17 Polyclonal Antibody diluted at 1:2000**



Western Blot analysis of customer's (cat sample) using Ribosomal Protein L17 Polyclonal Antibody diluted at 1:2000



Immunohistochemistry analysis of paraffin-embedded human prostate carcinoma tissue, using RPL17 Antibody. The picture on the right is blocked with the synthesized peptide.



Western blot analysis of lysates from HeLa and COS7 cells, using RPL17 Antibody. The lane on the right is blocked with the synthesized peptide.