

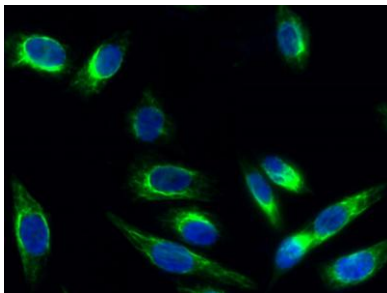
**Rho A rabbit pAb****Cat#: orb766224 (Manual)**

For research use only. Not intended for diagnostic use.

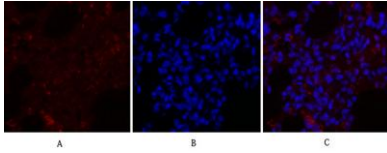
|                                 |   |
|---------------------------------|---|
| <b>Product Name</b>             | Rho A rabbit pAb  |
| <b>Host species</b>             | Rabbit  |
| <b>Applications</b>             | IF;WB;IHC;ELISA   |
| <b>Species Cross-Reactivity</b> | Human;Mouse;Rat   |
| <b>Recommended dilutions</b>    | IF: 1:50-200 Western Blot: 1/500 - 1/2000. Immunohistochemistry: 1/100 - 1/300. ELISA: 1/5000. Not yet tested in other applications.  |
| <b>Immunogen</b>                | The antiserum was produced against synthesized peptide derived from human RhoA. AA range:144-193  |
| <b>Specificity</b>              | Rho A Polyclonal Antibody detects endogenous levels of Rho A protein.   |
| <b>Formulation</b>              | Liquid in PBS containing 50% glycerol, 0.5% BSA and 0.02% sodium azide..  |
| <b>Storage</b>                  | Store at -20°C. Avoid repeated freeze-thaw cycles.  |
| <b>Protein Name</b>             | Transforming protein RhoA   |
| <b>Gene Name</b>                | RHOA  |
| <b>Cellular localization</b>    | Cell membrane; Lipid-anchor; Cytoplasmic side. Cytoplasm, cytoskeleton. Cleavage furrow. Cytoplasm, cell cortex . Midbody. Cell projection, lamellipodium . Cell projection, dendrite . Nucleus . Localized to cell-cell contacts in calcium-treated keratinocytes (By similarity). Translocates to the equatorial region before furrow formation in a ECT2-dependent manner. Localizes to the equatorial cell cortex (at the site of the presumptive furrow) in early anaphase in an activated form and in a myosin- and actin-independent manner. . |

|                                |   |
|--------------------------------|---|
| <b>Purification</b>            | The antibody was affinity-purified from rabbit antiserum by affinity-chromatography using epitope-specific immunogen. |
| <b>Clonality</b>               | Polyclonal  |
| <b>Concentration</b>           | 1 mg/ml   |
| <b>Observed band</b>           | 22kD  |
| <b>Human Gene ID</b>           | 387   |
| <b>Human Swiss-Prot Number</b> | P61586  |
| <b>Alternative Names</b>       | RHOA; ARH12; ARHA; RHO12; Transforming protein RhoA; Rho cDNA clone 12; h12   |

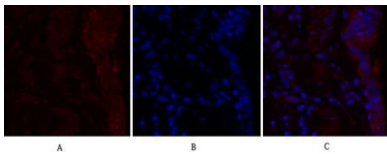
**Background** This gene encodes a member of the Rho family of small GTPases, which cycle between inactive GDP-bound and active GTP-bound states and function as molecular switches in signal transduction cascades. Rho proteins promote reorganization of the actin cytoskeleton and regulate cell shape, attachment, and motility. Overexpression of this gene is associated with tumor cell proliferation and metastasis. Multiple alternatively spliced variants have been identified. [provided by RefSeq, Sep 2015],



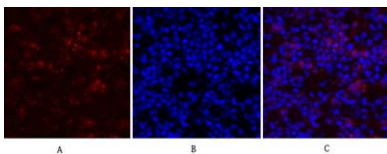
**Immunofluorescence analysis of HeLa cell. 1, Rho A Polyclonal Antibody (green) was diluted at 1:200 (4° overnight). 2, Goat Anti Rabbit Alexa Fluor 488 Catalog: RS3211 was diluted at 1:1000 (room temperature, 50min). 3 DAPI (blue) 10min.**



**Immunofluorescence analysis of rat-lung tissue. 1,Rho A Polyclonal Antibody(red) was diluted at 1:200(4°C,overnight). 2, Cy3 labeled Secondary antibody was diluted at 1:300(room temperature, 50min).3, Picture B: DAPI(blue) 10min. Picture A:Target. Picture B: DAPI. Picture C: merge of A+B**



**Immunofluorescence analysis of rat-lung tissue. 1,Rho A Polyclonal Antibody(red) was diluted at 1:200(4°C,overnight). 2, Cy3 labeled Secondary antibody was diluted at 1:300(room temperature, 50min).3, Picture B: DAPI(blue) 10min. Picture A:Target. Picture B: DAPI. Picture C: merge of A+B**



**Immunofluorescence analysis of mouse-lung tissue. 1,Rho A Polyclonal Antibody(red) was diluted at 1:200(4°C,overnight). 2, Cy3 labeled Secondary antibody was diluted at 1:300(room temperature, 50min).3, Picture B: DAPI(blue) 10min. Picture A:Target. Picture B: DAPI. Picture C: merge of A+B**