

REP-2 rabbit pAb**Cat#: orb766214 (Manual)**

For research use only. Not intended for diagnostic use.

Product Name	REP-2 rabbit pAb
Host species	Rabbit
Applications	WB;IHC;IF;ELISA
Species Cross-Reactivity	Human
Recommended dilutions	Western Blot: 1/500 - 1/2000. Immunohistochemistry: 1/100 - 1/300. ELISA: 1/5000. Not yet tested in other applications.
Immunogen	The antiserum was produced against synthesized peptide derived from human CHML. AA range:128-177
Specificity	REP-2 Polyclonal Antibody detects endogenous levels of REP-2 protein.
Formulation	Liquid in PBS containing 50% glycerol, 0.5% BSA and 0.02% sodium azide..
Storage	Store at -20°C. Avoid repeated freeze-thaw cycles.
Protein Name	Rab proteins geranylgeranyltransferase component A 2
Gene Name	CHML
Cellular localization	Cytoplasm, cytosol .
Purification	The antibody was affinity-purified from rabbit antiserum by affinity-chromatography using epitope-specific immunogen.
Clonality	Polyclonal

Concentration 1 mg/ml

Observed band 85kD

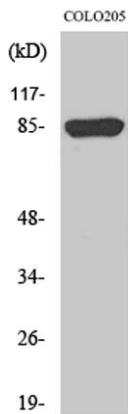
Human Gene ID 1122

Human Swiss-Prot Number P26374

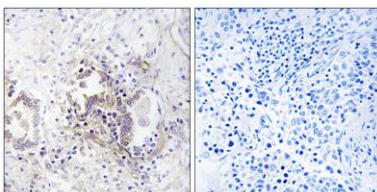
Alternative Names CHML; REP2; Rab proteins geranylgeranyltransferase component A 2; Choroideraemia-like protein; Rab escort protein 2; REP-2

Background

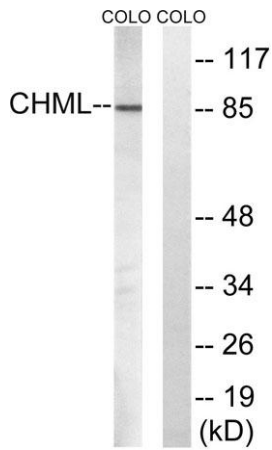
The product of the CHML gene supports geranylgeranylation of most Rab proteins and may substitute for REP-1 in tissues other than retina. CHML is localized close to the gene for Usher syndrome type II. [provided by RefSeq, Jul 2008],



Western Blot analysis of various cells using REP-2 Polyclonal Antibody diluted at 1:1000



Immunohistochemistry analysis of paraffin-embedded human lung carcinoma tissue, using CHML Antibody. The picture on the right is blocked with the synthesized peptide.



Western blot analysis of lysates from COLO cells, using CHML Antibody. The lane on the right is blocked with the synthesized peptide.