

Rad GTPase rabbit pAb**Cat#: orb766177 (Manual)**

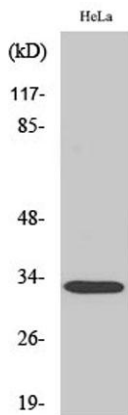
For research use only. Not intended for diagnostic use.

Product Name	Rad GTPase rabbit pAb
Host species	Rabbit
Applications	WB;IHC;IF;ELISA
Species Cross-Reactivity	Human;Rat;Mouse;
Recommended dilutions	Western Blot: 1/500 - 1/2000. Immunohistochemistry: 1/100 - 1/300. Immunofluorescence: 1/200 - 1/1000. ELISA: 1/20000. Not yet tested in other applications.
Immunogen	The antiserum was produced against synthesized peptide derived from human RAD. AA range:41-90
Specificity	Rad GTPase Polyclonal Antibody detects endogenous levels of Rad GTPase protein.
Formulation	Liquid in PBS containing 50% glycerol, 0.5% BSA and 0.02% sodium azide..
Storage	Store at -20°C. Avoid repeated freeze-thaw cycles.
Protein Name	GTP-binding protein RAD
Gene Name	RRAD
Cellular localization	Cell membrane .
Purification	The antibody was affinity-purified from rabbit antiserum by affinity-chromatography using epitope-specific immunogen.
Clonality	Polyclonal

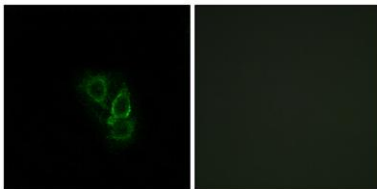
Concentration	1 mg/ml
Observed band	33kD
Human Gene ID	6236
Human Swiss-Prot Number	P55042
Alternative Names	RRAD; RAD; GTP-binding protein RAD; RAD1; Ras associated with diabetes

Background

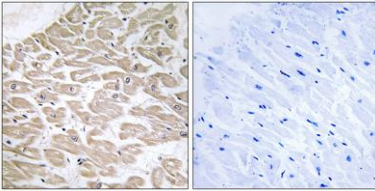
similarity:Belongs to the small GTPase superfamily. RGK family.,subunit:Interacts with calmodulin preferentially to the inactive, GDP-form. Binds CAMKII which is capable of phosphorylating RAD in vitro.,tissue specificity:Skeletal and cardiac muscle, and lung. Lesser amounts in placenta and kidney. Also detected in adipose tissue. Overexpressed in muscle of type II diabetic humans.,



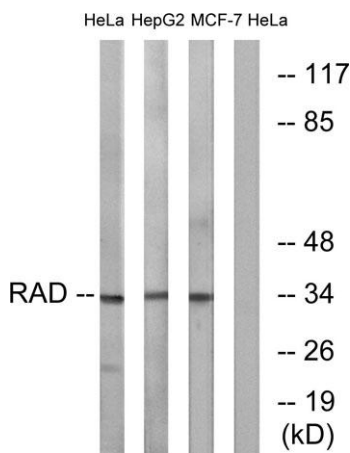
Western Blot analysis of various cells using Rad GTPase Polyclonal Antibody



Immunofluorescence analysis of A549 cells, using RAD Antibody. The picture on the right is blocked with the synthesized peptide.



Immunohistochemistry analysis of paraffin-embedded human heart tissue, using RAD Antibody. The picture on the right is blocked with the synthesized peptide.



Western blot analysis of lysates from HeLa and HepG2/MCF-7 cells, using RAD Antibody. The lane on the right is blocked with the synthesized peptide.