

RACK7 rabbit pAb**Cat#: orb766176 (Manual)**

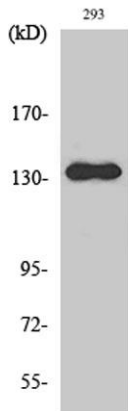
For research use only. Not intended for diagnostic use.

Product Name	RACK7 rabbit pAb
Host species	Rabbit
Applications	WB;ELISA;IHC
Species Cross-Reactivity	Human;Rat;Mouse;
Recommended dilutions	WB 1:500-2000;IHC-p 1:50-300; ELISA 2000-20000
Immunogen	The antiserum was produced against synthesized peptide derived from human PKCB1. AA range:581-630
Specificity	RACK7 Polyclonal Antibody detects endogenous levels of RACK7 protein.
Formulation	Liquid in PBS containing 50% glycerol, 0.5% BSA and 0.02% sodium azide..
Storage	Store at -20°C. Avoid repeated freeze-thaw cycles.
Protein Name	Protein kinase C-binding protein 1
Gene Name	ZMYND8
Cellular localization	Nucleus . Cytoplasm . Sequestered in the cytoplasm through the interaction with DBN1. .
Purification	The antibody was affinity-purified from rabbit antiserum by affinity-chromatography using epitope-specific immunogen.
Clonality	Polyclonal

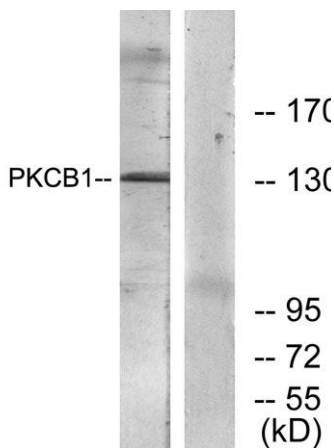
Concentration	1 mg/ml
Observed band	132kD
Human Gene ID	23613
Human Swiss-Prot Number	Q9ULU4
Alternative Names	ZMYND8; KIAA1125; PRKCBP1; RACK7; Protein kinase C-binding protein 1; Cutaneous T-cell lymphoma-associated antigen se14-3; CTCL-associated antigen se14-3; Rack7; Zinc finger MYND domain-containing protein 8

Background

The protein encoded by this gene is a receptor for activated C-kinase (RACK) protein. The encoded protein has been shown to bind in vitro to activated protein kinase C beta I. In addition, this protein is a cutaneous T-cell lymphoma-associated antigen. Finally, the protein contains a bromodomain and two zinc fingers, and is thought to be a transcriptional regulator. Multiple transcript variants encoding several different isoforms have been found for this gene. [provided by RefSeq, Jul 2008],



Western Blot analysis of various cells using RACK7 Polyclonal Antibody



Western blot analysis of lysates from 293 cells, using PKCB1 Antibody. The lane on the right is blocked with the synthesized peptide.



Immunohistochemical analysis of paraffin-embedded human tonsil. 1, Antibody was diluted at 1:200(4° overnight). 2, Tris-EDTA,pH9.0 was used for antigen retrieval. 3,Secondary antibody was diluted at 1:200(room temperature, 45min).