

**Rabaptin-5 $\beta$  rabbit pAb****Cat#: orb766171 (Manual)**

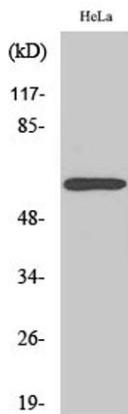
For research use only. Not intended for diagnostic use.

<b>Product Name</b>	Rabaptin-5 $\beta$ rabbit pAb
<b>Host species</b>	Rabbit
<b>Applications</b>	WB;IHC;IF;ELISA
<b>Species Cross-Reactivity</b>	Human;Mouse;Rat
<b>Recommended dilutions</b>	Western Blot: 1/500 - 1/2000. Immunohistochemistry: 1/100 - 1/300. ELISA: 1/10000. Not yet tested in other applications.
<b>Immunogen</b>	The antiserum was produced against synthesized peptide derived from human RABEP2. AA range:353-402
<b>Specificity</b>	Rabaptin-5 $\beta$ Polyclonal Antibody detects endogenous levels of Rabaptin-5 $\beta$ protein.
<b>Formulation</b>	Liquid in PBS containing 50% glycerol, 0.5% BSA and 0.02% sodium azide..
<b>Storage</b>	Store at -20°C. Avoid repeated freeze-thaw cycles.
<b>Protein Name</b>	Rab GTPase-binding effector protein 2
<b>Gene Name</b>	RABEP2
<b>Cellular localization</b>	Cytoplasm . Early endosome . Cytoplasm, cytoskeleton, microtubule organizing center, centrosome . Cytoplasm, cytoskeleton, cilium basal body .
<b>Purification</b>	The antibody was affinity-purified from rabbit antiserum by affinity-chromatography using epitope-specific immunogen.
<b>Clonality</b>	Polyclonal

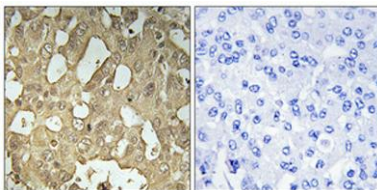
<b>Concentration</b>	1 mg/ml
<b>Observed band</b>	64kD
<b>Human Gene ID</b>	79874
<b>Human Swiss-Prot Number</b>	Q9H5N1
<b>Alternative Names</b>	RABEP2; RABPT5B; Rab GTPase-binding effector protein 2; Rabaptin-5beta

## Background

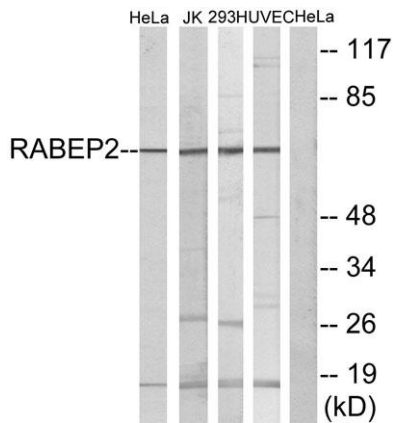
function:Plays a role in membrane trafficking and in homotypic early endosome fusion.,similarity:Belongs to the rabaptin family.,subunit:Heterodimer with RABGEF1. The dimer binds RAB5A that has been activated by GTP-binding.,



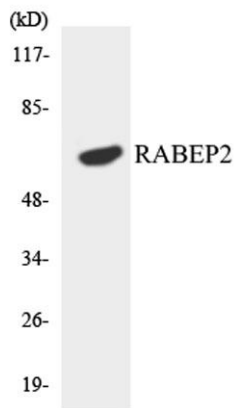
Western Blot analysis of various cells using Rabaptin-5 $\beta$  Polyclonal Antibody



Immunohistochemical analysis of paraffin-embedded Human breast cancer. Antibody was diluted at 1:100(4 $^{\circ}$  overnight). High-pressure and temperature Tris-EDTA,pH8.0 was used for antigen retrieval. Negative control (right) obtained from antibody was pre-absorbed by immunogen peptide.



**Western blot analysis of lysates from HeLa, Jurkat, 293, and HUVEC cells, using RABEP2 Antibody. The lane on the right is blocked with the synthesized peptide.**



**Western blot analysis of the lysates from HeLa cells using RABEP2 antibody.**