

Rab 6C rabbit pAb**Cat#: orb766167 (Manual)**

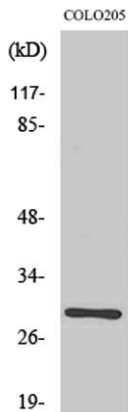
For research use only. Not intended for diagnostic use.

Product Name	Rab 6C rabbit pAb
Host species	Rabbit
Applications	WB;IHC
Species Cross-Reactivity	Human;Mouse;Rat
Recommended dilutions	WB 1:500-2000;IHC-p 1:50-300
Immunogen	The antiserum was produced against synthesized peptide derived from human RAB6C. AA range:165-214
Specificity	Rab 6C Polyclonal Antibody detects endogenous levels of Rab 6C protein.
Formulation	Liquid in PBS containing 50% glycerol, 0.5% BSA and 0.02% sodium azide..
Storage	Store at -20°C. Avoid repeated freeze-thaw cycles.
Protein Name	Ras-related protein Rab-6C
Gene Name	RAB6C
Cellular localization	Nucleus . Cytoplasm . Cytoplasm, cytoskeleton, microtubule organizing center, centrosome .
Purification	The antibody was affinity-purified from rabbit antiserum by affinity-chromatography using epitope-specific immunogen.
Clonality	Polyclonal

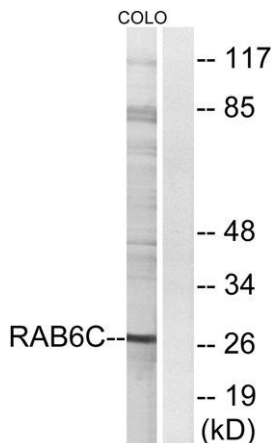
Concentration	1 mg/ml
Observed band	28kD
Human Gene ID	84084
Human Swiss-Prot Number	Q9H0N0
Alternative Names	RAB6C; WTH3; Ras-related protein Rab-6C; Rab6-like protein WTH3

Background

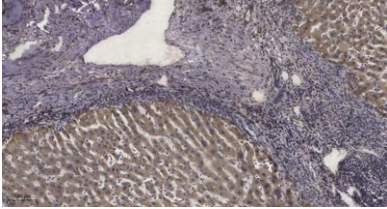
function:Protein transport. Regulator of membrane traffic from the Golgi apparatus towards the endoplasmic reticulum (ER). Has a low GTPase activity.,PTM:Phosphorylated upon DNA damage, probably by ATM or ATR.,similarity:Belongs to the small GTPase superfamily. Rab family.,subunit:Interacts with SCYL1BP1. Interacts with VSP52 and RABGAP1. Isoform 1 interacts with RAB6KIFL but not isoform 2. Isoforms 1 and 2 interact with BICD1 and BICD2. Interacts with TMF1.,tissue specificity:Ubiquitous.,



Western Blot analysis of various cells using Rab 6C Polyclonal Antibody



Western blot analysis of lysates from COLO cells, using RAB6C Antibody. The lane on the right is blocked with the synthesized peptide.



Immunohistochemical analysis of paraffin-embedded human liver cancer. 1, Antibody was diluted at 1:200(4° overnight). 2, Tris-EDTA,pH9.0 was used for antigen retrieval. 3,Secondary antibody was diluted at 1:200(room temperature, 45min).