

**PUMA rabbit pAb****Cat#: orb766160 (Manual)**

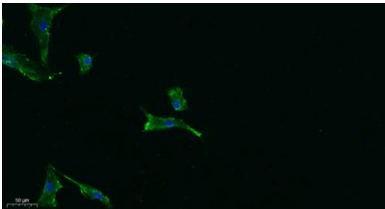
For research use only. Not intended for diagnostic use.

<b>Product Name</b>	PUMA rabbit pAb
<b>Host species</b>	Rabbit
<b>Applications</b>	WB IF;ELISA
<b>Species Cross-Reactivity</b>	Human;Mouse;Rat
<b>Recommended dilutions</b>	WB 1:500-2000 IF 1:100-300 ELISA 1:5000-20000 Not yet tested in other applications.
<b>Immunogen</b>	The antiserum was produced against synthesized peptide derived from human PUMA. AA range:120-169
<b>Specificity</b>	PUMA Polyclonal Antibody detects endogenous levels of PUMA protein.
<b>Formulation</b>	Liquid in PBS containing 50% glycerol, 0.5% BSA and 0.02% sodium azide..
<b>Storage</b>	Store at -20°C. Avoid repeated freeze-thaw cycles.
<b>Protein Name</b>	Bcl-2-binding component 3
<b>Gene Name</b>	BBC3
<b>Cellular localization</b>	Mitochondrion . Localized to the mitochondria in order to induce cytochrome c release.
<b>Purification</b>	The antibody was affinity-purified from rabbit antiserum by affinity-chromatography using epitope-specific immunogen.
<b>Clonality</b>	Polyclonal

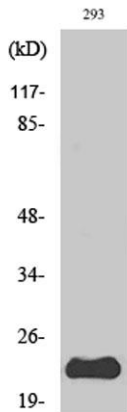
<b>Concentration</b>	1 mg/ml
<b>Observed band</b>	23kD
<b>Human Gene ID</b>	27113
<b>Human Swiss-Prot Number</b>	Q9BXH1
<b>Alternative Names</b>	BBC3; PUMA; Bcl-2-binding component 3; JFY-1; p53 up-regulated modulator of apoptosis

## Background

This gene encodes a member of the BCL-2 family of proteins. This family member belongs to the BH3-only pro-apoptotic subclass. The protein cooperates with direct activator proteins to induce mitochondrial outer membrane permeabilization and apoptosis. It can bind to anti-apoptotic Bcl-2 family members to induce mitochondrial dysfunction and caspase activation. Because of its pro-apoptotic role, this gene is a potential drug target for cancer therapy and for tissue injury. Alternative splicing results in multiple transcript variants. [provided by RefSeq, Dec 2011],



**Immunofluorescence analysis of A549. 1,primary Antibody was diluted at 1:200(4°C overnight). 2, Goat Anti Rabbit IgG (H&L) - Alexa Fluor 488 Secondary antibody was diluted at 1:1000(room temperature, 50min).3, Picture B: DAPI(blue) 10min.**



**Western Blot analysis of various cells using PUMA Polyclonal Antibody**



Western blot analysis of lysate from 293 cells treated with EGF, using PUMA antibody.