

PSMD2 rabbit pAb**Cat#: orb766148 (Manual)**

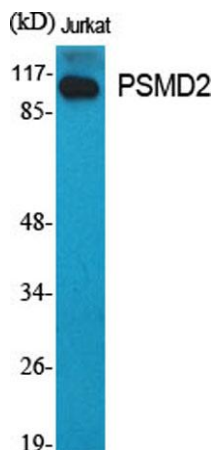
For research use only. Not intended for diagnostic use.

| | |
|---------------------------------|---|
| Product Name | PSMD2 rabbit pAb |
| Host species | Rabbit |
| Applications | WB;IHC;IF;ELISA |
| Species Cross-Reactivity | Human;Mouse;Rat |
| Recommended dilutions | Western Blot: 1/500 - 1/2000. Immunohistochemistry: 1/100 - 1/300. Immunofluorescence: 1/200 - 1/1000. ELISA: 1/20000. Not yet tested in other applications. |
| Immunogen | The antiserum was produced against synthesized peptide derived from human PSMD2. AA range:101-150 |
| Specificity | PSMD2 Polyclonal Antibody detects endogenous levels of PSMD2 protein. |
| Formulation | Liquid in PBS containing 50% glycerol, 0.5% BSA and 0.02% sodium azide.. |
| Storage | Store at -20°C. Avoid repeated freeze-thaw cycles. |
| Protein Name | 26S proteasome non-ATPase regulatory subunit 2 |
| Gene Name | PSMD2 |
| Cellular localization | proteasome complex,nucleus,nucleoplasm,cytosol,proteasome regulatory particle,proteasome regulatory particle, base subcomplex,membrane,proteasome accessory complex,proteasome storage granule,extracellular exosome, |
| Purification | The antibody was affinity-purified from rabbit antiserum by affinity-chromatography using epitope-specific immunogen. |

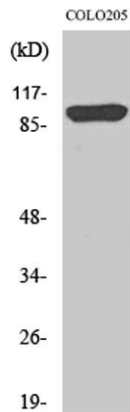
| | |
|--------------------------------|---|
| Clonality | Polyclonal |
| Concentration | 1 mg/ml |
| Observed band | 100kD |
| Human Gene ID | 5708 |
| Human Swiss-Prot Number | Q13200 |
| Alternative Names | PSMD2; TRAP2; 26S proteasome non-ATPase regulatory subunit 2; 26S proteasome regulatory subunit RPN1; 26S proteasome regulatory subunit S2; 26S proteasome subunit p97; Protein 55.11; Tumor necrosis factor type 1 receptor-associated protein |

Background

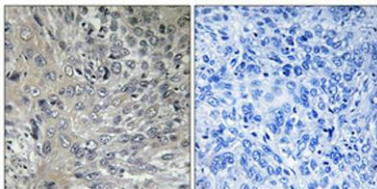
The 26S proteasome is a multicatalytic proteinase complex with a highly ordered structure composed of 2 complexes, a 20S core and a 19S regulator. The 20S core is composed of 4 rings of 28 non-identical subunits; 2 rings are composed of 7 alpha subunits and 2 rings are composed of 7 beta subunits. The 19S regulator is composed of a base, which contains 6 ATPase subunits and 2 non-ATPase subunits, and a lid, which contains up to 10 non-ATPase subunits. Proteasomes are distributed throughout eukaryotic cells at a high concentration and cleave peptides in an ATP/ubiquitin-dependent process in a non-lysosomal pathway. An essential function of a modified proteasome, the immunoproteasome, is the processing of class I MHC peptides. This gene encodes one of the non-ATPase subunits of the 19S regulator lid. In addition to participation in proteasome function, this subunit may also participate



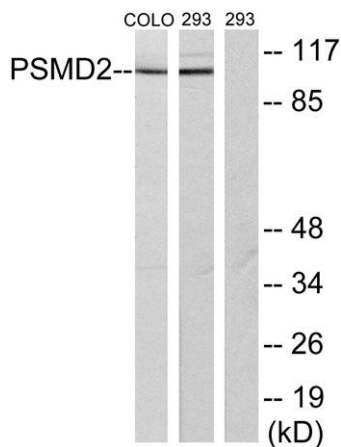
Western Blot analysis of various cells using PSMD2 Polyclonal Antibody



Western Blot analysis of 293 cells using PSMD2 Polyclonal Antibody



Immunohistochemical analysis of paraffin-embedded Human cervix cancer. Antibody was diluted at 1:100(4° overnight). High-pressure and temperature Tris-EDTA,pH8.0 was used for antigen retrieval. Negative contrl (right) obtained from antibody was pre-absorbed by immunogen peptide.



Western blot analysis of lysates from COLO205 and 293 cells, using PSMD2 Antibody. The lane on the right is blocked with the synthesized peptide.