

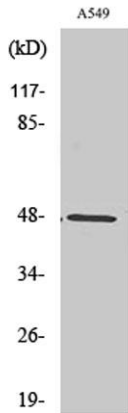
PSK-H1 rabbit pAb**Cat#: orb766144 (Manual)**

For research use only. Not intended for diagnostic use.

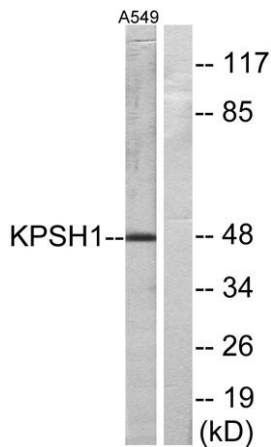
Product Name	PSK-H1 rabbit pAb
Host species	Rabbit
Applications	WB;IHC;IF;ELISA
Species Cross-Reactivity	Human;Mouse
Recommended dilutions	Western Blot: 1/500 - 1/2000. Immunohistochemistry: 1/100 - 1/300. ELISA: 1/20000. Not yet tested in other applications.
Immunogen	The antiserum was produced against synthesized peptide derived from human KPSH1. AA range:261-310
Specificity	PSK-H1 Polyclonal Antibody detects endogenous levels of PSK-H1 protein.
Formulation	Liquid in PBS containing 50% glycerol, 0.5% BSA and 0.02% sodium azide..
Storage	Store at -20°C. Avoid repeated freeze-thaw cycles.
Protein Name	Serine/threonine-protein kinase H1
Gene Name	PSKH1
Cellular localization	Golgi apparatus. Cytoplasm, cytoskeleton, microtubule organizing center, centrosome. Nucleus speckle. Endoplasmic reticulum membrane; Lipid-anchor. Cell membrane; Lipid-anchor. Cytoplasm. Localized in the brefeldin A-sensitive Golgi compartment, at centrosomes, in the nucleus with a somewhat speckle-like presence, membrane-associated to the endoplasmic reticulum (ER) and the plasma membrane (PM), and more diffusely in the cytoplasm. Found to concentrate in splicing factor compartments (SFCs) within the nucleus of interphase cells. The acylation-negative form may be only cytoplasmic and nuclear. Acylation seems to allow the sequestering to the intracellular membranes. Myristoylation may mediate targeting to the intracellular non-Golgi membranes and palmitoylation may mediate the

targeting t

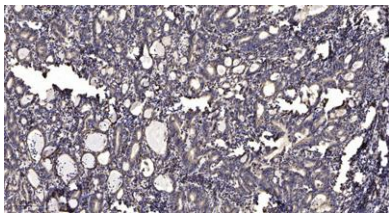
Purification	The antibody was affinity-purified from rabbit antiserum by affinity-chromatography using epitope-specific immunogen.
Clonality	Polyclonal
Concentration	1 mg/ml
Observed band	48kD
Human Gene ID	5681
Human Swiss-Prot Number	P11801
Alternative Names	PSKH1; Serine/threonine-protein kinase H1; Protein serine kinase H1; PSK-H1
Background	<p>catalytic activity:ATP + a protein = ADP + a phosphoprotein.,enzyme regulation:Activity depends on Ca(2+) concentration.,function:May be a SFC-associated serine kinase (splicing factor compartment-associated serine kinase) with a role in intranuclear SR protein (non-snRNP splicing factors containing a serine/arginine-rich domain) trafficking and pre-mRNA processing.,PTM:Autophosphorylated on serine residues.,PTM:Myristoylated. Required for membrane association. Prerequisite for palmitoylation to occur.,PTM:Palmitoylated.,similarity:Belongs to the protein kinase superfamily. CAMK Ser/Thr protein kinase family.,similarity:Contains 1 protein kinase domain.,subcellular location:Localized in the Brefeldin A-sensitive Golgi compartment, at centrosomes, in the nucleus with a somewhat speckle-like presence, membrane-associated to the endoplasmic reticulum (ER) and the plasma membrane (PM), and more diffusely in the cytoplasm. Found to concentrate in splicing factor compartments (SFCs) within the nucleus of interphase cells. The acylation-negative form may be only cytoplasmic and nuclear. Acylation seems to allow the sequestering to the intracellular membranes. Myristoylation may mediate targeting to the intracellular non-Golgi membranes and palmitoylation may mediate the targeting to the Golgi membranes. Dual acylation is required to stabilize the interaction with Golgi membranes.,subunit:Homodimer.,tissue specificity:Expressed in all tissues and cell lines tested with the highest level of abundance in testis.,</p>



Western Blot analysis of various cells using PSK-H1 Polyclonal Antibody



Western blot analysis of lysates from A549 cells, using KPSH1 Antibody. The lane on the right is blocked with the synthesized peptide.



Immunohistochemical analysis of paraffin-embedded human Gastric adenocarcinoma. 1, Antibody was diluted at 1:200(4° overnight). 2, Tris-EDTA,pH9.0 was used for antigen retrieval. 3,Secondary antibody was diluted at 1:200(room temperature, 45min).