

**PRPH rabbit pAb****Cat#: orb766139 (Manual)**

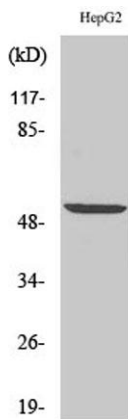
For research use only. Not intended for diagnostic use.

<b>Product Name</b>	PRPH rabbit pAb
<b>Host species</b>	Rabbit
<b>Applications</b>	WB;IHC;IF;ELISA
<b>Species Cross-Reactivity</b>	Human;Rat
<b>Recommended dilutions</b>	Western Blot: 1/500 - 1/2000. Immunohistochemistry: 1/100 - 1/300. ELISA: 1/20000. Not yet tested in other applications.
<b>Immunogen</b>	The antiserum was produced against synthesized peptide derived from human Peripherin. AA range:421-470
<b>Specificity</b>	PRPH Polyclonal Antibody detects endogenous levels of PRPH protein.
<b>Formulation</b>	Liquid in PBS containing 50% glycerol, 0.5% BSA and 0.02% sodium azide..
<b>Storage</b>	Store at -20°C. Avoid repeated freeze-thaw cycles.
<b>Protein Name</b>	Peripherin
<b>Gene Name</b>	PRPH
<b>Cellular localization</b>	Cytoplasm, cytoskeleton . Cell projection, axon . Perikaryon .
<b>Purification</b>	The antibody was affinity-purified from rabbit antiserum by affinity-chromatography using epitope-specific immunogen.
<b>Clonality</b>	Polyclonal

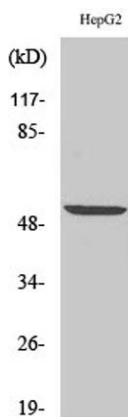
<b>Concentration</b>	1 mg/ml
<b>Observed band</b>	55kD
<b>Human Gene ID</b>	5630
<b>Human Swiss-Prot Number</b>	P41219
<b>Alternative Names</b>	PRPH; NEF4; PRPH1; Peripherin; Neurofilament 4

## Background

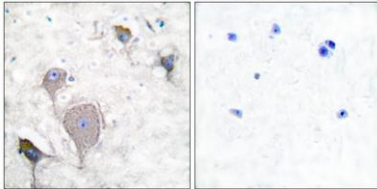
This gene encodes a cytoskeletal protein found in neurons of the peripheral nervous system. The encoded protein is a type III intermediate filament protein with homology to other cytoskeletal proteins such as desmin, and is a different protein than the peripherin found in photoreceptors. Mutations in this gene have been associated with susceptibility to amyotrophic lateral sclerosis. [provided by RefSeq, Jul 2008],



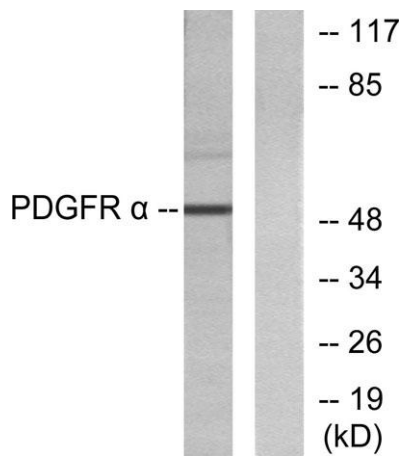
**Western Blot analysis of various cells using PRPH Polyclonal Antibody diluted at 1:1000**



**Western Blot analysis of HepG2 cells using PRPH Polyclonal Antibody diluted at 1:1000**



**Immunohistochemistry analysis of paraffin-embedded human brain tissue, using Peripherin Antibody. The picture on the right is blocked with the synthesized peptide.**



**Western blot analysis of lysates from HepG2 cells, using Peripherin Antibody. The lane on the right is blocked with the synthesized peptide.**