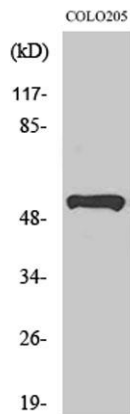


**PRP19 rabbit pAb****Cat#: orb766137 (Manual)**

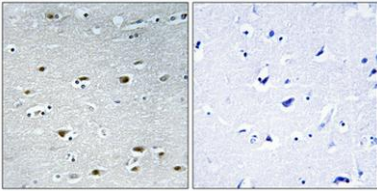
For research use only. Not intended for diagnostic use.

<b>Product Name</b>	PRP19 rabbit pAb
<b>Host species</b>	Rabbit
<b>Applications</b>	WB;IHC;IF;ELISA
<b>Species Cross-Reactivity</b>	Human;Mouse;Rat
<b>Recommended dilutions</b>	Western Blot: 1/500 - 1/2000. Immunohistochemistry: 1/100 - 1/300. ELISA: 1/40000. Not yet tested in other applications.
<b>Immunogen</b>	The antiserum was produced against synthesized peptide derived from human PRPF19. AA range:171-220
<b>Specificity</b>	PRP19 Polyclonal Antibody detects endogenous levels of PRP19 protein.
<b>Formulation</b>	Liquid in PBS containing 50% glycerol, 0.5% BSA and 0.02% sodium azide..
<b>Storage</b>	Store at -20°C. Avoid repeated freeze-thaw cycles.
<b>Protein Name</b>	Pre-mRNA-processing factor 19
<b>Gene Name</b>	PRPF19
<b>Cellular localization</b>	Nucleus . Nucleus, nucleoplasm . Cytoplasm, cytoskeleton, spindle . Cytoplasm . Lipid droplet . Nucleoplasmic in interphase cells. Irregularly distributed in anaphase cells. In prophase cells, uniformly distributed, but not associated with condensing chromosomes. Found in extrachromosomal regions in metaphase cells. Mainly localized to the mitotic spindle apparatus when chromosomes segregate during anaphase. When nuclei reform during late telophase, uniformly distributed in daughter cells and displays no preferred association with decondensing chromatin. Recruited on damaged DNA at sites of double-strand break. .

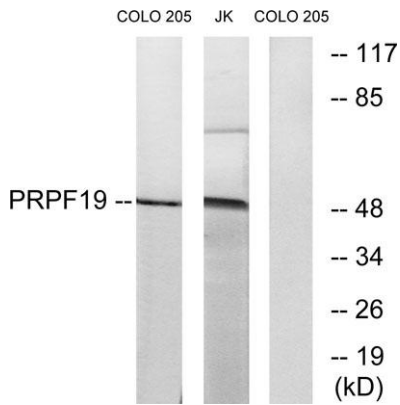
<b>Purification</b>	The antibody was affinity-purified from rabbit antiserum by affinity-chromatography using epitope-specific immunogen.
<b>Clonality</b>	Polyclonal
<b>Concentration</b>	1 mg/ml
<b>Observed band</b>	50kD
<b>Human Gene ID</b>	27339
<b>Human Swiss-Prot Number</b>	Q9UMS4
<b>Alternative Names</b>	PRPF19; NMP200; PRP19; SNEV; Pre-mRNA-processing factor 19; Nuclear matrix protein 200; PRP19/PSO4 homolog; hPso4; Senescence evasion factor
<b>Background</b>	PSO4 is the human homolog of yeast Pso4, a gene essential for cell survival and DNA repair (Beck et al., 2008 [PubMed 18263876]).[supplied by OMIM, Sep 2008],



**Western Blot analysis of various cells using PRP19 Polyclonal Antibody**



**Immunohistochemical analysis of paraffin-embedded Human brain. Antibody was diluted at 1:100(4° overnight). High-pressure and temperature Tris-EDTA,pH8.0 was used for antigen retrieval. Negative control (right) obtained from antibody was pre-absorbed by i**



**Western blot analysis of lysates from COLO and Jurkat cells, using PRPF19 Antibody. The lane on the right is blocked with the synthesized peptide.**