

**PR rabbit pAb****Cat#: orb766130 (Manual)**

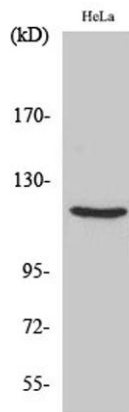
For research use only. Not intended for diagnostic use.

<b>Product Name</b>	PR rabbit pAb
<b>Host species</b>	Rabbit
<b>Applications</b>	WB;IHC;IF;ELISA
<b>Species Cross-Reactivity</b>	Human;Rat;Mouse;
<b>Recommended dilutions</b>	Western Blot: 1/500 - 1/2000. Immunohistochemistry: 1/100 - 1/300. Immunofluorescence: 1/200 - 1/1000. ELISA: 1/5000. Not yet tested in other applications.
<b>Immunogen</b>	The antiserum was produced against synthesized peptide derived from human Progesterone Receptor. AA range:371-420
<b>Specificity</b>	PR Polyclonal Antibody detects endogenous levels of PR protein.
<b>Formulation</b>	Liquid in PBS containing 50% glycerol, 0.5% BSA and 0.02% sodium azide..
<b>Storage</b>	Store at -20°C. Avoid repeated freeze-thaw cycles.
<b>Protein Name</b>	Progesterone receptor
<b>Gene Name</b>	PGR
<b>Cellular localization</b>	Nucleus. Cytoplasm. Nucleoplasmic shuttling is both hormone- and cell cycle-dependent. On hormone stimulation, retained in the cytoplasm in the G(1) and G(2)/M phases.; [Isoform A]: Nucleus. Cytoplasm. Mainly nuclear.; [Isoform 4]: Mitochondrion outer membrane .
<b>Purification</b>	The antibody was affinity-purified from rabbit antiserum by affinity-chromatography using epitope-specific immunogen.

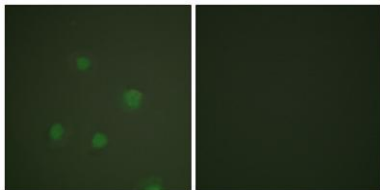
<b>Clonality</b>	Polyclonal
<b>Concentration</b>	1 mg/ml
<b>Observed band</b>	99kD
<b>Human Gene ID</b>	5241
<b>Human Swiss-Prot Number</b>	P06401
<b>Alternative Names</b>	PGR; NR3C3; Progesterone receptor; PR; Nuclear receptor subfamily 3 group C member 3

## Background

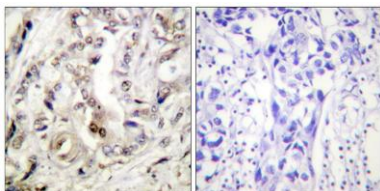
This gene encodes a member of the steroid receptor superfamily. The encoded protein mediates the physiological effects of progesterone, which plays a central role in reproductive events associated with the establishment and maintenance of pregnancy. This gene uses two distinct promoters and translation start sites in the first exon to produce several transcript variants, both protein coding and non-protein coding. Two of the isoforms (A and B) are identical except for an additional 165 amino acids found in the N-terminus of isoform B and mediate their own response genes and physiologic effects with little overlap. [provided by RefSeq, Sep 2015],



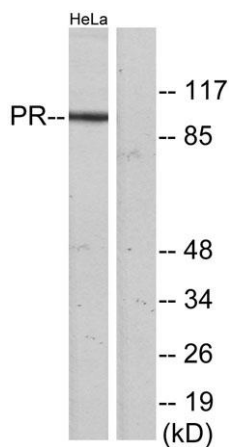
Western Blot analysis of various cells using PR Polyclonal Antibody



**Immunofluorescence analysis of A549 cells, using Progesterone Receptor Antibody. The picture on the right is blocked with the synthesized peptide.**



**Immunohistochemistry analysis of paraffin-embedded human breast carcinoma tissue, using Progesterone Receptor Antibody. The picture on the right is blocked with the synthesized peptide.**



**Western blot analysis of lysates from HeLa cells, using Progesterone Receptor Antibody. The lane on the right is blocked with the synthesized peptide.**