

**PP2A-C $\alpha$  rabbit pAb****Cat#: orb766123 (Manual)**

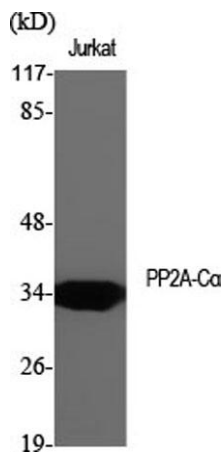
For research use only. Not intended for diagnostic use.

<b>Product Name</b>	PP2A-C $\alpha$ rabbit pAb
<b>Host species</b>	Rabbit
<b>Applications</b>	WB;IHC;IF;ELISA
<b>Species Cross-Reactivity</b>	Human;Mouse;Rat
<b>Recommended dilutions</b>	Western Blot: 1/500 - 1/2000. Immunohistochemistry: 1/100 - 1/300. Immunofluorescence: 1/200 - 1/1000. ELISA: 1/5000. Not yet tested in other applications.
<b>Immunogen</b>	The antiserum was produced against synthesized peptide derived from human PP2A-alpha. AA range:260-309
<b>Specificity</b>	PP2A-C $\alpha$ Polyclonal Antibody detects endogenous levels of PP2A-C $\alpha$ protein.
<b>Formulation</b>	Liquid in PBS containing 50% glycerol, 0.5% BSA and 0.02% sodium azide..
<b>Storage</b>	Store at -20°C. Avoid repeated freeze-thaw cycles.
<b>Protein Name</b>	Serine/threonine-protein phosphatase 2A catalytic subunit alpha isoform
<b>Gene Name</b>	PPP2CA
<b>Cellular localization</b>	Cytoplasm . Nucleus . Chromosome, centromere . Cytoplasm, cytoskeleton, spindle pole . In prometaphase cells, but not in anaphase cells, localizes at centromeres (PubMed:16541025). During mitosis, also found at spindle poles (PubMed:16541025). Centromeric localization requires the presence of SGO2 (By similarity). .
<b>Purification</b>	The antibody was affinity-purified from rabbit antiserum by affinity-chromatography using epitope-specific immunogen.

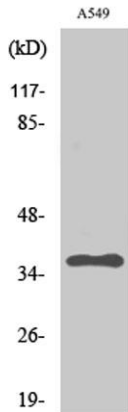
<b>Clonality</b>	Polyclonal
<b>Concentration</b>	1 mg/ml
<b>Observed band</b>	35kD
<b>Human Gene ID</b>	5515
<b>Human Swiss-Prot Number</b>	P67775
<b>Alternative Names</b>	PPP2CA; Serine/threonine-protein phosphatase 2A catalytic subunit alpha isoform; PP2A-alpha; Replication protein C; RP-C

## Background

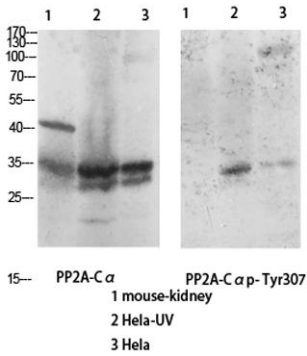
This gene encodes the phosphatase 2A catalytic subunit. Protein phosphatase 2A is one of the four major Ser/Thr phosphatases, and it is implicated in the negative control of cell growth and division. It consists of a common heteromeric core enzyme, which is composed of a catalytic subunit and a constant regulatory subunit, that associates with a variety of regulatory subunits. This gene encodes an alpha isoform of the catalytic subunit. [provided by RefSeq, Jul 2008],



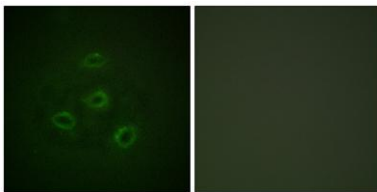
**Western Blot analysis of various cells using PP2A-C $\alpha$  Polyclonal Antibody diluted at 1:2000**



Western Blot analysis of A549 cells using PP2A-C $\alpha$  Polyclonal Antibody diluted at 1:2000



Western Blot analysis of various cells using Antibody diluted at 1:1000. Secondary antibody(catalog#:RS0002) was diluted at 1:20000



Immunofluorescence analysis of HepG2 cells, using PP2A-alpha Antibody. The picture on the right is blocked with the synthesized peptide.