

**POLR3A rabbit pAb****Cat#: orb766118 (Manual)**

For research use only. Not intended for diagnostic use.

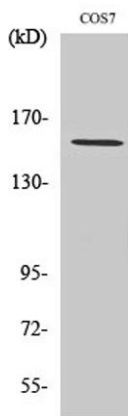
<b>Product Name</b>	POLR3A rabbit pAb
<b>Host species</b>	Rabbit
<b>Applications</b>	WB;IHC;IF;ELISA
<b>Species Cross-Reactivity</b>	Human;Mouse;Monkey
<b>Recommended dilutions</b>	Western Blot: 1/500 - 1/2000. Immunohistochemistry: 1/100 - 1/300. ELISA: 1/40000. Not yet tested in other applications.
<b>Immunogen</b>	The antiserum was produced against synthesized peptide derived from human RPC1. AA range:31-80
<b>Specificity</b>	POLR3A Polyclonal Antibody detects endogenous levels of POLR3A protein.
<b>Formulation</b>	Liquid in PBS containing 50% glycerol, 0.5% BSA and 0.02% sodium azide..
<b>Storage</b>	Store at -20°C. Avoid repeated freeze-thaw cycles.
<b>Protein Name</b>	DNA-directed RNA polymerase III subunit RPC1
<b>Gene Name</b>	POLR3A
<b>Cellular localization</b>	Nucleus.
<b>Purification</b>	The antibody was affinity-purified from rabbit antiserum by affinity-chromatography using epitope-specific immunogen.
<b>Clonality</b>	Polyclonal

Explore. Bioreagents.

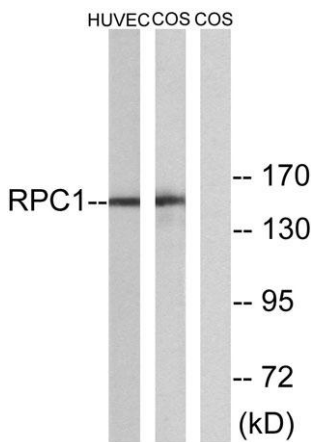
<b>Concentration</b>	1 mg/ml
<b>Observed band</b>	156kD
<b>Human Gene ID</b>	11128
<b>Human Swiss-Prot Number</b>	O14802
<b>Alternative Names</b>	POLR3A; DNA-directed RNA polymerase III subunit RPC1; RNA polymerase III subunit C1; DNA-directed RNA polymerase III largest subunit; DNA-directed RNA polymerase III subunit A; RNA polymerase III 155 kDa subunit; RPC155; RNA polymerase III

**Background**

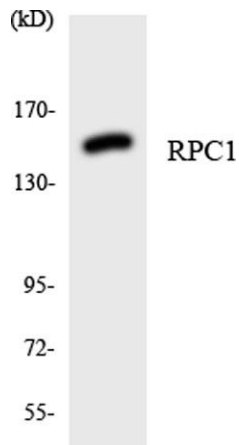
The protein encoded by this gene is the catalytic component of RNA polymerase III, which synthesizes small RNAs. The encoded protein also acts as a sensor to detect foreign DNA and trigger an innate immune response. [provided by RefSeq, Aug 2011],



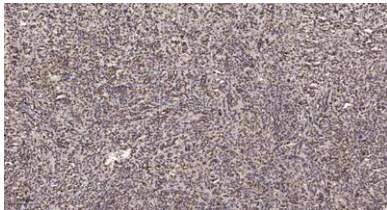
**Western Blot analysis of various cells using POLR3A Polyclonal Antibody cells nucleus extracted by Minute TM Cytoplasmic and Nuclear Fractionation kit (SC-003, Invent biotech, MN, USA).**



**Western blot analysis of lysates from COS and HUVEC cells, using RPC1 Antibody. The lane on the right is blocked with the synthesized peptide.**



Western blot analysis of the lysates from 293 cells using RPC1 antibody.



**Immunohistochemical analysis of paraffin-embedded human spleen. 1, Tris-EDTA, pH9.0 was used for antigen retrieval. 2 Antibody was diluted at 1:200(4° overnight).3,Secondary antibody was diluted at 1:200(room temperature, 45min).**