

PMEPA1 rabbit pAb**Cat#: orb766113 (Manual)**

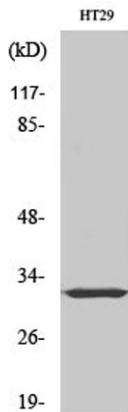
For research use only. Not intended for diagnostic use.

Product Name	PMEPA1 rabbit pAb
Host species	Rabbit
Applications	WB;IHC;IF;ELISA
Species Cross-Reactivity	Human;Rat;Mouse;
Recommended dilutions	Western Blot: 1/500 - 1/2000. Immunohistochemistry: 1/100 - 1/300. Immunofluorescence: 1/200 - 1/1000. ELISA: 1/20000. Not yet tested in other applications.
Immunogen	The antiserum was produced against synthesized peptide derived from human TMEPA. AA range:101-150
Specificity	PMEPA1 Polyclonal Antibody detects endogenous levels of PMEPA1 protein.
Formulation	Liquid in PBS containing 50% glycerol, 0.5% BSA and 0.02% sodium azide..
Storage	Store at -20°C. Avoid repeated freeze-thaw cycles.
Protein Name	Transmembrane prostate androgen-induced protein
Gene Name	PMEPA1
Cellular localization	Early endosome membrane; Single-pass membrane protein. Golgi apparatus membrane; Single-pass membrane protein.
Purification	The antibody was affinity-purified from rabbit antiserum by affinity-chromatography using epitope-specific immunogen.
Clonality	Polyclonal

Concentration	1 mg/ml
Observed band	37kD
Human Gene ID	56937
Human Swiss-Prot Number	Q969W9
Alternative Names	PMEPA1; STAG1; TMEPAI; Transmembrane prostate androgen-induced protein; Solid tumor-associated 1 protein

Background

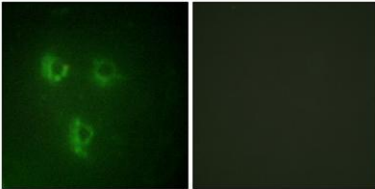
This gene encodes a transmembrane protein that contains a Smad interacting motif (SIM). Expression of this gene is induced by androgens and transforming growth factor beta, and the encoded protein suppresses the androgen receptor and transforming growth factor beta signaling pathways through interactions with Smad proteins. Overexpression of this gene may play a role in multiple types of cancer. Alternatively spliced transcript variants encoding multiple isoforms have been observed for this gene. [provided by RefSeq, Dec 2011],



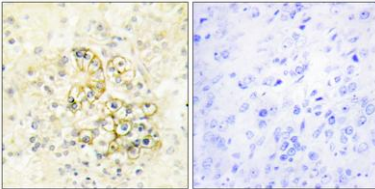
Western Blot analysis of various cells using PMEPA1 Polyclonal Antibody diluted at 1:500



Western Blot analysis of HT29 cells using PMEPA1 Polyclonal Antibody diluted at 1:500



Immunofluorescence analysis of HUVEC cells, using TMEPA Antibody. The picture on the right is blocked with the synthesized peptide.



Immunohistochemistry analysis of paraffin-embedded human prostate tissue, using TMEPA Antibody. The picture on the right is blocked with the synthesized peptide.