

PIASx rabbit pAb**Cat#: orb766080 (Manual)**

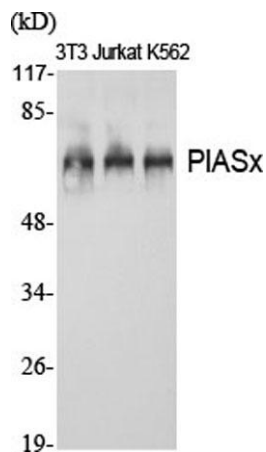
For research use only. Not intended for diagnostic use.

Product Name	PIASx rabbit pAb
Host species	Rabbit
Applications	WB;ELISA;IHC
Species Cross-Reactivity	Human;Mouse;Rat;Monkey
Recommended dilutions	WB 1:500-2000;IHC-p 1:50-300; ELISA 2000-20000
Immunogen	The antiserum was produced against synthesized peptide derived from human PIAS2. AA range:10-59
Specificity	PIASx Polyclonal Antibody detects endogenous levels of PIASx protein.
Formulation	Liquid in PBS containing 50% glycerol, 0.5% BSA and 0.02% sodium azide..
Storage	Store at -20°C. Avoid repeated freeze-thaw cycles.
Protein Name	E3 SUMO-protein ligase PIAS2
Gene Name	PIAS2
Cellular localization	Nucleus speckle . Nucleus, PML body . Nucleus . Colocalizes at least partially with promyelocytic leukemia nuclear bodies (PML NBs) (PubMed:22406621). Colocalizes with SUMO1 in nuclear granules (By similarity). .
Purification	The antibody was affinity-purified from rabbit antiserum by affinity-chromatography using epitope-specific immunogen.

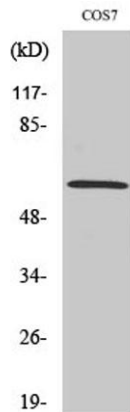
Clonality	Polyclonal
Concentration	1 mg/ml
Observed band	68kD
Human Gene ID	9063
Human Swiss-Prot Number	O75928
Alternative Names	PIAS2; PIASX; E3 SUMO-protein ligase PIAS2; Androgen receptor-interacting protein 3; ARIP3; DAB2-interacting protein; DIP; Msx-interacting zinc finger protein; Miz1; PIAS-NY protein; Protein inhibitor of activated STAT x; Protein inhibitor

Background

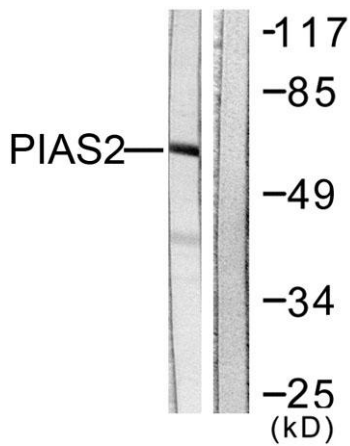
This gene encodes a member of the protein inhibitor of activated STAT (PIAS) family. PIAS proteins function as SUMO E3 ligases and play important roles in many cellular processes by mediating the sumoylation of target proteins. Alternatively spliced transcript variants encoding multiple isoforms have been observed for this gene. Isoforms of the encoded protein enhance the sumoylation of specific target proteins including the p53 tumor suppressor protein, c-Jun, and the androgen receptor. A pseudogene of this gene is located on the short arm of chromosome 4. The symbol MIZ1 has also been associated with ZBTB17 which is a different gene located on chromosome 1. [provided by RefSeq, Aug 2011],



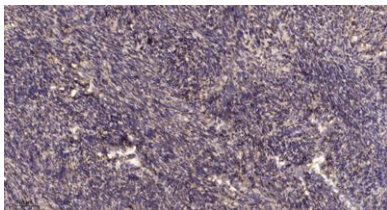
Western Blot analysis of various cells using PIASx Polyclonal Antibody diluted at 1:1000 cells nucleus extracted by Minute TM Cytoplasmic and Nuclear Fractionation kit (SC-003, Inventbiotech, MN, USA).



Western Blot analysis of COS7 cells using PIASx Polyclonal Antibody diluted at 1:1000 cells nucleus extracted by Minute™ Cytoplasmic and Nuclear Fractionation kit (SC-003, Inventibiotech, MN, USA).



Western blot analysis of lysates from COS7 cells, using PIAS2 Antibody. The lane on the right is blocked with the synthesized peptide.



Immunohistochemical analysis of paraffin-embedded human uterus. 1, Antibody was diluted at 1:200 (4° overnight). 2, Tris-EDTA, pH 9.0 was used for antigen retrieval. 3, Secondary antibody was diluted at 1:200 (room temperature, 45min).