

**PIAS 3 rabbit pAb****Cat#: orb766079 (Manual)**

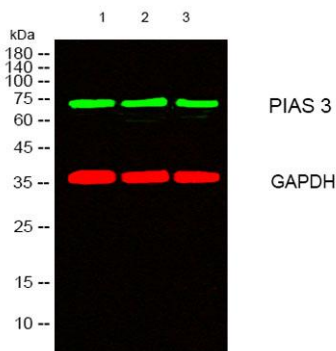
For research use only. Not intended for diagnostic use.

<b>Product Name</b>	PIAS 3 rabbit pAb
<b>Host species</b>	Rabbit
<b>Applications</b>	WB;IHC;IF;ELISA
<b>Species Cross-Reactivity</b>	Human;Mouse;Rat
<b>Recommended dilutions</b>	Western Blot: 1/500 - 1/2000. Immunohistochemistry: 1/100 - 1/300. ELISA: 1/10000. Not yet tested in other applications.
<b>Immunogen</b>	The antiserum was produced against synthesized peptide derived from human PIAS3. AA range:10-59
<b>Specificity</b>	PIAS 3 Polyclonal Antibody detects endogenous levels of PIAS 3 protein.
<b>Formulation</b>	Liquid in PBS containing 50% glycerol, 0.5% BSA and 0.02% sodium azide..
<b>Storage</b>	Store at -20°C. Avoid repeated freeze-thaw cycles.
<b>Protein Name</b>	E3 SUMO-protein ligase PIAS3
<b>Gene Name</b>	PIAS3
<b>Cellular localization</b>	Cytoplasm . Nucleus . Nucleus speckle . Colocalizes with MITF in the nucleus. Colocalizes with GFII1 in nuclear dots. Colocalizes with SUMO1 in nuclear granules. .
<b>Purification</b>	The antibody was affinity-purified from rabbit antiserum by affinity-chromatography using epitope-specific immunogen.

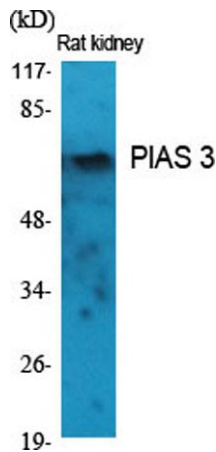
<b>Clonality</b>	Polyclonal
<b>Concentration</b>	1 mg/ml
<b>Observed band</b>	68kD
<b>Human Gene ID</b>	10401
<b>Human Swiss-Prot Number</b>	Q9Y6X2
<b>Alternative Names</b>	PIAS3; E3 SUMO-protein ligase PIAS3; Protein inhibitor of activated STAT protein 3

## Background

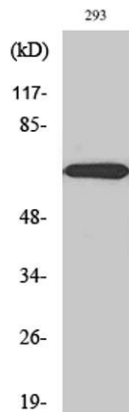
This gene encodes a member of the PIAS [protein inhibitor of activated STAT (signal transducer and activator of transcription)] family of transcriptional modulators. The protein functions as a SUMO (small ubiquitin-like modifier)-E3 ligase which catalyzes the covalent attachment of a SUMO protein to specific target substrates. It directly binds to several transcription factors and either blocks or enhances their activity. Alternatively spliced transcript variants of this gene have been identified, but the full-length nature of some of these variants has not been determined. [provided by RefSeq, Jul 2008],



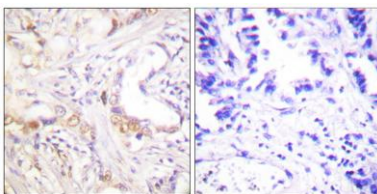
Western blot analysis of lysates from 1) 293 , 2) Rat kidney, 3) HELA cells, ( Green ) primary antibody was diluted at 1:1000, 4° over night, secondary antibody (cat:RS23920) was diluted at 1:10000, 37° 1hour. ( Red ) GAPDH Monoclonal Antibody(2B8) (cat:YM3029) antibody was diluted at 1:5000 as loading control, 4° over night, secondary antibody (cat:RS23710) was diluted at 1:10000, 37° 1hour.



Western Blot analysis of various cells using PIAS 3 Polyclonal Antibody diluted at 1:2000 cells nucleus extracted by Minute™ Cytoplasmic and Nuclear Fractionation kit (SC-003, Invent biotech, MN, USA).



Western Blot analysis of 293 cells using PIAS 3 Polyclonal Antibody diluted at 1:2000 cells nucleus extracted by Minute™ Cytoplasmic and Nuclear Fractionation kit (SC-003, Invent biotech, MN, USA).



Immunohistochemistry analysis of paraffin-embedded human lung carcinoma tissue, using PIAS3 Antibody. The picture on the right is blocked with the synthesized peptide.