

PDE4C rabbit pAb**Cat#: orb766038 (Manual)**

For research use only. Not intended for diagnostic use.

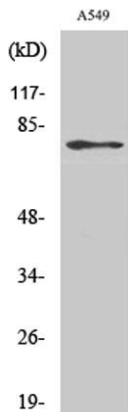
Product Name	PDE4C rabbit pAb
Host species	Rabbit
Applications	WB;ELISA;IHC
Species Cross-Reactivity	Human;Mouse;Rat
Recommended dilutions	WB 1:500-2000;IHC-p 1:50-300; ELISA 2000-20000
Immunogen	The antiserum was produced against synthesized peptide derived from human PDE4C. AA range:291-340
Specificity	PDE4C Polyclonal Antibody detects endogenous levels of PDE4C protein.
Formulation	Liquid in PBS containing 50% glycerol, 0.5% BSA and 0.02% sodium azide..
Storage	Store at -20°C. Avoid repeated freeze-thaw cycles.
Protein Name	cAMP-specific 3',5'-cyclic phosphodiesterase 4C
Gene Name	PDE4C
Cellular localization	Cell projection, cilium .
Purification	The antibody was affinity-purified from rabbit antiserum by affinity-chromatography using epitope-specific immunogen.
Clonality	Polyclonal

Explore. Bioreagents.

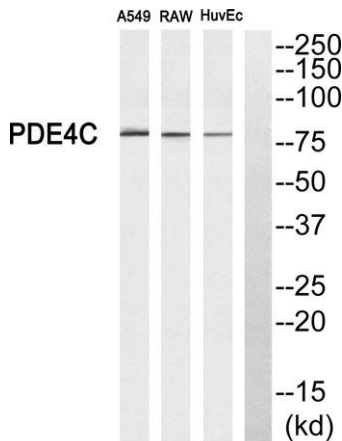
Concentration	1 mg/ml
Observed band	80kD
Human Gene ID	5143
Human Swiss-Prot Number	Q08493
Alternative Names	PDE4C; DPDE1; cAMP-specific 3'; 5'-cyclic phosphodiesterase 4C; DPDE1; PDE21

Background

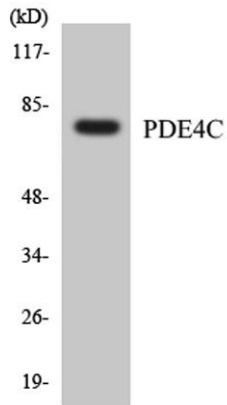
The protein encoded by this gene belongs to the cyclic nucleotide phosphodiesterase (PDE) family, and PDE4 subfamily. This PDE hydrolyzes the second messenger, cAMP, which is a regulator and mediator of a number of cellular responses to extracellular signals. Thus, by regulating the cellular concentration of cAMP, this protein plays a key role in many important physiological processes. Alternatively spliced transcript variants encoding different isoforms have been described for this gene.[provided by RefSeq, Jul 2011],



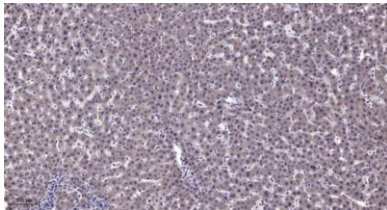
Western Blot analysis of various cells using PDE4C Polyclonal Antibody



Western blot analysis of PDE4C Antibody. The lane on the right is blocked with the PDE4C peptide.



Western blot analysis of the lysates from HeLa cells using PDE4C antibody.



Immunohistochemical analysis of paraffin-embedded human liver cancer. 1, Antibody was diluted at 1:200(4° overnight). 2, Tris-EDTA,pH9.0 was used for antigen retrieval. 3,Secondary antibody was diluted at 1:200(room temperature, 45min).