

PBFE rabbit pAb**Cat#: orb766033 (Manual)**

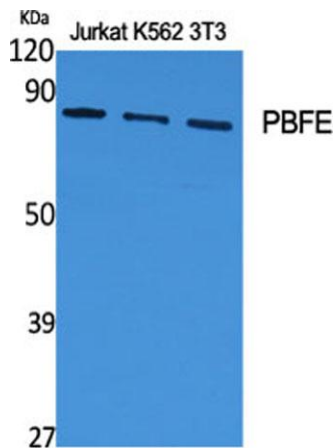
For research use only. Not intended for diagnostic use.

Product Name	PBFE rabbit pAb
Host species	Rabbit
Applications	WB;IHC;IF;ELISA
Species Cross-Reactivity	Human;Rat
Recommended dilutions	Western Blot: 1/500 - 1/2000. Immunohistochemistry: 1/100 - 1/300. ELISA: 1/10000. Not yet tested in other applications.
Immunogen	The antiserum was produced against synthesized peptide derived from human EHHADH. AA range:476-525
Specificity	PBFE Polyclonal Antibody detects endogenous levels of PBFE protein.
Formulation	Liquid in PBS containing 50% glycerol, 0.5% BSA and 0.02% sodium azide..
Storage	Store at -20°C. Avoid repeated freeze-thaw cycles.
Protein Name	Peroxisomal bifunctional enzyme
Gene Name	EHHADH
Cellular localization	Peroxisome .
Purification	The antibody was affinity-purified from rabbit antiserum by affinity-chromatography using epitope-specific immunogen.
Clonality	Polyclonal

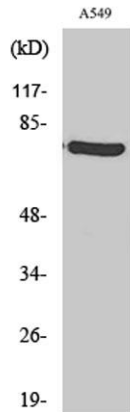
Concentration	1 mg/ml
Observed band	80kD
Human Gene ID	1962
Human Swiss-Prot Number	Q08426
Alternative Names	EHHADH; ECHD; Peroxisomal bifunctional enzyme; PBE; PBFE

Background

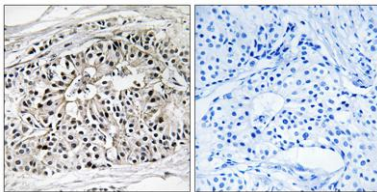
catalytic activity:(3S)-3-hydroxyacyl-CoA = trans-2(or 3)-enoyl-CoA + H₂O.,catalytic activity:(3Z)-dodec-3-enoyl-CoA = (2E)-dodec-2-enoyl-CoA.,catalytic activity:(S)-3-hydroxyacyl-CoA + NAD(+) = 3-oxoacyl-CoA + NADH.,disease:Absent in patients suffering with peroxisomal disorders such as Zellweger syndrome, neonatal adrenoleukodystrophy and infantile Refsum disease.,pathway:Lipid metabolism; fatty acid beta-oxidation.,similarity:In the C-terminal section; belongs to the 3-hydroxyacyl-CoA dehydrogenase family.,similarity:In the N-terminal section; belongs to the enoyl-CoA hydratase/isomerase family.,subunit:Monomer.,tissue specificity:Liver and kidney. Lower amounts seen in the brain.,



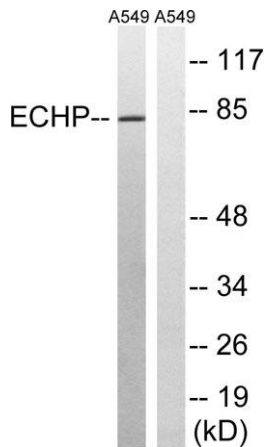
Western Blot analysis of various cells using PBFE Polyclonal Antibody



Western Blot analysis of A549 cells using PBFE Polyclonal Antibody



Immunohistochemistry analysis of paraffin-embedded human breast carcinoma tissue, using EHHADH Antibody. The picture on the right is blocked with the synthesized peptide.



Western blot analysis of lysates from A549 cells, using EHHADH Antibody. The lane on the right is blocked with the synthesized peptide.