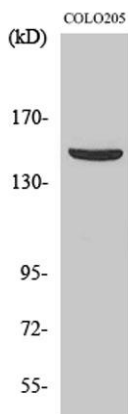


PARD3A rabbit pAb**Cat#: orb766024 (Manual)**

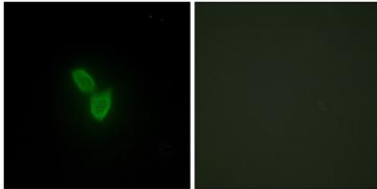
For research use only. Not intended for diagnostic use.

Product Name	PARD3A rabbit pAb
Host species	Rabbit
Applications	WB;IHC;IF;ELISA
Species Cross-Reactivity	Human;Mouse;Rat
Recommended dilutions	Western Blot: 1/500 - 1/2000. Immunohistochemistry: 1/100 - 1/300. Immunofluorescence: 1/200 - 1/1000. ELISA: 1/20000. Not yet tested in other applications.
Immunogen	The antiserum was produced against synthesized peptide derived from human PARD3. AA range:1141-1190
Specificity	PARD3A Polyclonal Antibody detects endogenous levels of PARD3A protein.
Formulation	Liquid in PBS containing 50% glycerol, 0.5% BSA and 0.02% sodium azide..
Storage	Store at -20°C. Avoid repeated freeze-thaw cycles.
Protein Name	Partitioning defective 3 homolog
Gene Name	PARD3
Cellular localization	Cytoplasm . Endomembrane system . Cell junction . Cell junction, tight junction . Cell junction, adherens junction . Cell membrane . Cytoplasm, cell cortex . Cytoplasm, cytoskeleton . Localized along the cell-cell contact region. Colocalizes with PARD6A and PRKCI at epithelial tight junctions. Colocalizes with the cortical actin that overlays the meiotic spindle during metaphase I and metaphase II. Colocalized with SIRT2 in internode region of myelin sheath (By similarity). Presence of KRIT1, CDH5 and RAP1B is required for its localization to the cell junction. .

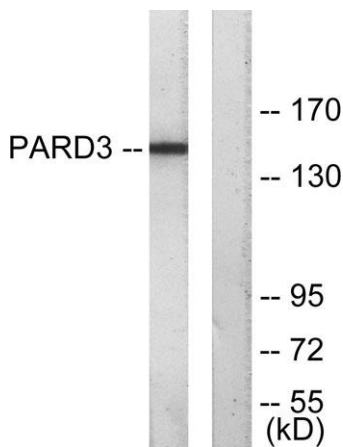
Purification	The antibody was affinity-purified from rabbit antiserum by affinity-chromatography using epitope-specific immunogen.
Clonality	Polyclonal
Concentration	1 mg/ml
Observed band	151kD
Human Gene ID	56288
Human Swiss-Prot Number	Q8TEW0
Alternative Names	PARD3; PAR3; PAR3A; Partitioning defective 3 homolog; PAR-3; PARD-3; Atypical PKC isotype-specific-interacting protein; ASIP; CTCL tumor antigen se2-5; PAR3-alpha
Background	This gene encodes a member of the PARD protein family. PARD family members interact with other PARD family members and other proteins; they affect asymmetrical cell division and direct polarized cell growth. Multiple alternatively spliced transcript variants have been described for this gene. [provided by RefSeq, Oct 2011],



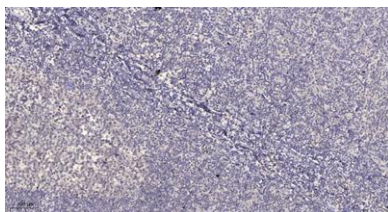
Western Blot analysis of various cells using PARD3A Polyclonal Antibody



Immunofluorescence analysis of HepG2 cells, using PARD3 Antibody. The picture on the right is blocked with the synthesized peptide.



Western blot analysis of lysates from COLO205 cells, using PARD3 Antibody. The lane on the right is blocked with the synthesized peptide.



Immunohistochemical analysis of paraffin-embedded human tonsil. 1, Antibody was diluted at 1:200(4° overnight). 2, Tris-EDTA,pH9.0 was used for antigen retrieval. 3,Secondary antibody was diluted at 1:200(room temperature, 30min).