

**PAR-4 rabbit pAb****Cat#: orb766023 (Manual)**

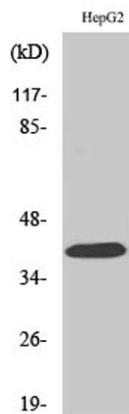
For research use only. Not intended for diagnostic use.

<b>Product Name</b>	PAR-4 rabbit pAb
<b>Host species</b>	Rabbit
<b>Applications</b>	WB;IF;ELISA
<b>Species Cross-Reactivity</b>	Human;Mouse;Rat
<b>Recommended dilutions</b>	Western Blot: 1/500 - 1/2000. Immunofluorescence: 1/200 - 1/1000. ELISA: 1/10000. Not yet tested in other applications.
<b>Immunogen</b>	The antiserum was produced against synthesized peptide derived from human PAR4. AA range:29-78
<b>Specificity</b>	PAR-4 Polyclonal Antibody detects endogenous levels of PAR-4 protein.
<b>Formulation</b>	Liquid in PBS containing 50% glycerol, 0.5% BSA and 0.02% sodium azide..
<b>Storage</b>	Store at -20°C. Avoid repeated freeze-thaw cycles.
<b>Protein Name</b>	Proteinase-activated receptor 4
<b>Gene Name</b>	F2RL3
<b>Cellular localization</b>	Cell membrane; Multi-pass membrane protein.
<b>Purification</b>	The antibody was affinity-purified from rabbit antiserum by affinity-chromatography using epitope-specific immunogen.
<b>Clonality</b>	Polyclonal

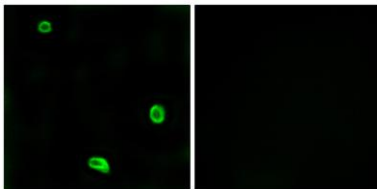
<b>Concentration</b>	1 mg/ml
<b>Observed band</b>	41kD
<b>Human Gene ID</b>	9002
<b>Human Swiss-Prot Number</b>	Q96RI0
<b>Alternative Names</b>	F2RL3; PAR4; Proteinase-activated receptor 4; PAR-4; Coagulation factor II receptor-like 3; Thrombin receptor-like 3

**Background**

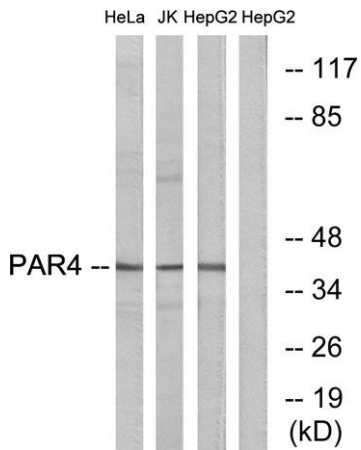
This gene encodes a member of the protease-activated receptor subfamily, part of the G-protein coupled receptor 1 family of proteins. The encoded receptor is proteolytically processed to reveal an extracellular N-terminal tethered ligand that binds to and activates the receptor. This receptor plays a role in blood coagulation, inflammation and response to pain. Hypomethylation at this gene may be associated with lung cancer in human patients. [provided by RefSeq, Sep 2016],



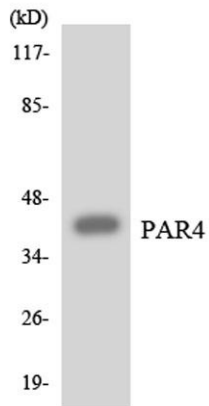
**Western Blot analysis of various cells using PAR-4 Polyclonal Antibody**



**Immunofluorescence analysis of LOVO cells, using PAR4 Antibody. The picture on the right is blocked with the synthesized peptide.**



Western blot analysis of lysates from HepG2 and Jurkat/HeLa cells, using PAR4 Antibody. The lane on the right is blocked with the synthesized peptide.



Western blot analysis of the lysates from HT-29 cells using PAR4 antibody.