

p140Cap rabbit pAb**Cat#: orb765971 (Manual)**

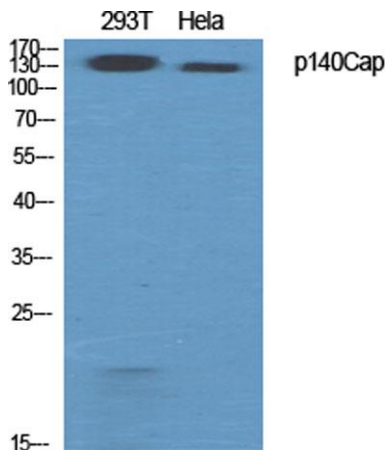
For research use only. Not intended for diagnostic use.

Product Name	p140Cap rabbit pAb
Host species	Rabbit
Applications	WB;ELISA
Species Cross-Reactivity	Human;Mouse;Rat
Recommended dilutions	Western Blot: 1/500 - 1/2000. ELISA: 1/20000. Not yet tested in other applications.
Immunogen	The antiserum was produced against synthesized peptide derived from human SNIP. AA range:811-860
Specificity	p140Cap Polyclonal Antibody detects endogenous levels of p140Cap protein.
Formulation	Liquid in PBS containing 50% glycerol, 0.5% BSA and 0.02% sodium azide..
Storage	Store at -20°C. Avoid repeated freeze-thaw cycles.
Protein Name	SRC kinase signaling inhibitor 1
Gene Name	SRCIN1
Cellular localization	Cytoplasm . Cytoplasm, cytoskeleton . Cell projection, axon . Cell projection, dendrite . Cell junction, synapse, presynapse . Cell junction, synapse, postsynapse . Cell junction, synapse, postsynaptic density . Localized to the perinuclear region, lamell
Purification	The antibody was affinity-purified from rabbit antiserum by affinity-chromatography using epitope-specific immunogen.

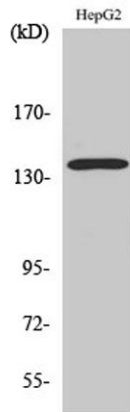
Clonality	Polyclonal
Concentration	1 mg/ml
Observed band	112kD
Human Gene ID	80725
Human Swiss-Prot Number	Q9C0H9
Alternative Names	SRCIN1; KIAA1684; P140; SRC kinase signaling inhibitor 1; SNAP-25-interacting protein; SNIP; p130Cas-associated protein; p140Cap

Background

function: Delays the onset of cell spreading in the early stages of cell adhesion to fibronectin. Also involved in calcium-dependent exocytosis from PC12 cells.,PTM: Tyrosine-phosphorylated in response to EGF and to cell adhesion to integrin ligands.,similarity: Belongs to the p140Cap family.,subcellular location: Localized to the perinuclear region, lamellopodia, cortical actin and actin stress fibers but not to focal adhesions.,subunit: Interacts with the N-terminal coiled-coil region of SNAP25 (By similarity). Interacts with BCAR1/p130Cas through its C-terminal domain.,



Western Blot analysis of various cells using p140Cap Polyclonal Antibody diluted at 1:500



Western Blot analysis of HeLa cells using p140Cap Polyclonal Antibody diluted at 1:500