

OTUB2 rabbit pAb**Cat#: orb765962 (Manual)**

For research use only. Not intended for diagnostic use.

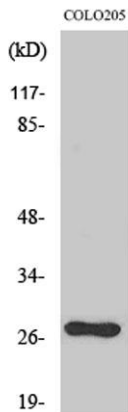
Product Name	OTUB2 rabbit pAb
Host species	Rabbit
Applications	WB;IHC;IF;ELISA
Species Cross-Reactivity	Human;Mouse;Rat
Recommended dilutions	Western Blot: 1/500 - 1/2000. Immunohistochemistry: 1/100 - 1/300. ELISA: 1/20000. Not yet tested in other applications.
Immunogen	The antiserum was produced against synthesized peptide derived from human OTUB2. AA range:133-182
Specificity	OTUB2 Polyclonal Antibody detects endogenous levels of OTUB2 protein.
Formulation	Liquid in PBS containing 50% glycerol, 0.5% BSA and 0.02% sodium azide..
Storage	Store at -20°C. Avoid repeated freeze-thaw cycles.
Protein Name	Ubiquitin thioesterase OTUB2
Gene Name	OTUB2
Cellular localization	nucleus,
Purification	The antibody was affinity-purified from rabbit antiserum by affinity-chromatography using epitope-specific immunogen.
Clonality	Polyclonal

Explore. Bioreagents.

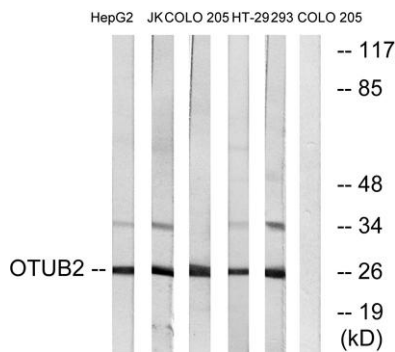
Concentration	1 mg/ml
Observed band	27kD
Human Gene ID	78990
Human Swiss-Prot Number	Q96DC9
Alternative Names	OTUB2; C14orf137; OTB2; OTU2; Ubiquitin thioesterase OTUB2; Deubiquitinating enzyme OTUB2; OTU domain-containing ubiquitin aldehyde-binding protein 2; Otubain-2; Ubiquitin-specific-processing protease OTUB2

Background

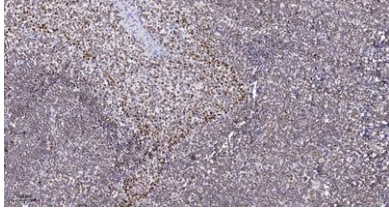
OTU deubiquitinase, ubiquitin aldehyde binding 2(OTUB2) Homo sapiens This gene encodes one of several deubiquitylating enzymes. Ubiquitin modification of proteins is needed for their stability and function; to reverse the process, deubiquitylating enzymes remove ubiquitin. This protein contains an OTU domain and binds Uba1 (ubiquitin aldehyde); an active cysteine protease site is present in the OTU domain. [provided by RefSeq, Aug 2011],



Western Blot analysis of various cells using OTUB2 Polyclonal Antibody diluted at 1:2000



Western blot analysis of lysates from COLO, HepG2, Jurkat, 293, and HT-29 cells, using OTUB2 Antibody. The lane on the right is blocked with the synthesized peptide.



Immunohistochemical analysis of paraffin-embedded human tonsil. 1, Antibody was diluted at 1:200(4° overnight). 2, Tris-EDTA,pH9.0 was used for antigen retrieval. 3,Secondary antibody was diluted at 1:200(room temperature, 45min).