

OPN rabbit pAb**Cat#: orb765958 (Manual)**

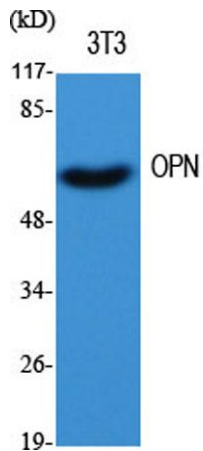
For research use only. Not intended for diagnostic use.

Product Name	OPN rabbit pAb
Host species	Rabbit
Applications	WB;IHC;IF;ELISA
Species Cross-Reactivity	Human;Mouse;Rat
Recommended dilutions	WB 1:500-2000;IHC-p 1:100-500;IF/ICC 1:100-500;ELISA 1:5000-20000
Immunogen	The antiserum was produced against synthesized peptide derived from human Osteopontin. AA range:261-310
Specificity	OPN Polyclonal Antibody detects endogenous levels of OPN protein.
Formulation	Liquid in PBS containing 50% glycerol, 0.5% BSA and 0.02% sodium azide..
Storage	Store at -20°C. Avoid repeated freeze-thaw cycles.
Protein Name	Osteopontin
Gene Name	SPP1
Cellular localization	Secreted.
Purification	The antibody was affinity-purified from rabbit antiserum by affinity-chromatography using epitope-specific immunogen.
Clonality	Polyclonal

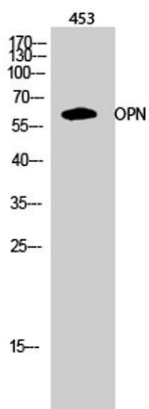
Concentration	1 mg/ml
Observed band	60kD
Human Gene ID	6696
Human Swiss-Prot Number	P10451
Alternative Names	SPP1; BNSP; OPN; PSEC0156; Osteopontin; Bone sialoprotein 1; Nephropontin; Secreted phosphoprotein 1; SPP-1; Urinary stone protein; Uropontin

Background

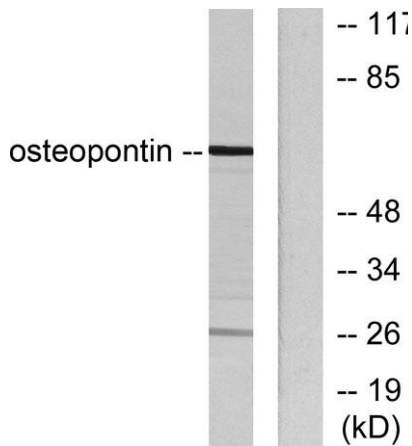
secreted phosphoprotein 1(SPP1) Homo sapiens The protein encoded by this gene is involved in the attachment of osteoclasts to the mineralized bone matrix. The encoded protein is secreted and binds hydroxyapatite with high affinity. The osteoclast vitronectin receptor is found in the cell membrane and may be involved in the binding to this protein. This protein is also a cytokine that upregulates expression of interferon-gamma and interleukin-12. Several transcript variants encoding different isoforms have been found for this gene. [provided by RefSeq, Oct 2011],



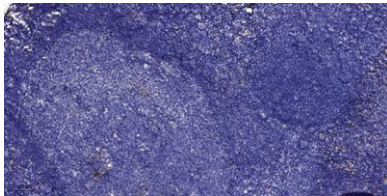
Western Blot analysis of various cells using OPN Polyclonal Antibody diluted at 1:500



Western Blot analysis of 453 cells using OPN Polyclonal Antibody diluted at 1:500



Western blot analysis of lysates from LOVO cells, using Osteopontin Antibody. The lane on the right is blocked with the synthesized peptide.



Immunohistochemical analysis of paraffin-embedded human tonsil. 1, Antibody was diluted at 1:200(4° overnight). 2, Tris-EDTA,pH9.0 was used for antigen retrieval. 3,Secondary antibody was diluted at 1:200(room temperature, 30min).