

Olfactory receptor 5D3 rabbit pAb

Cat#: orb765937 (Manual)

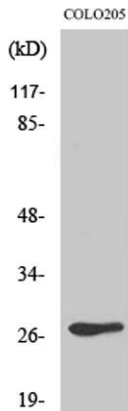
For research use only. Not intended for diagnostic use.

Product Name	Olfactory receptor 5D3 rabbit pAb
Host species	Rabbit
Applications	WB;IF;ELISA
Species Cross-Reactivity	Human;Rat;Mouse;
Recommended dilutions	Western Blot: 1/500 - 1/2000. Immunofluorescence: 1/200 - 1/1000. ELISA: 1/10000. Not yet tested in other applications.
Immunogen	The antiserum was produced against synthesized peptide derived from human OR5D3. AA range:148-197
Specificity	Olfactory receptor 5D3 Polyclonal Antibody detects endogenous levels of Olfactory receptor 5D3 protein.
Formulation	Liquid in PBS containing 50% glycerol, 0.5% BSA and 0.02% sodium azide..
Storage	Store at -20°C. Avoid repeated freeze-thaw cycles.
Protein Name	Olfactory receptor 5D3
Gene Name	OR5D3
Cellular localization	
Purification	The antibody was affinity-purified from rabbit antiserum by affinity-chromatography using epitope-specific immunogen.
Clonality	Polyclonal

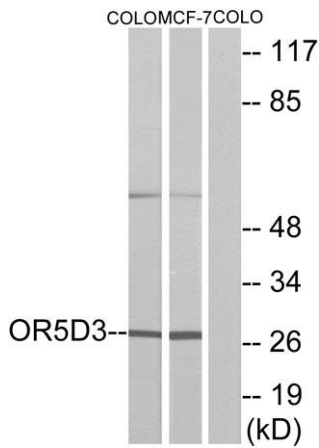
Concentration	1 mg/ml
Observed band	27kD
Human Gene ID	8594
Human Swiss-Prot Number	O95220/Q6IFD1/Q6KH09
Alternative Names	

Background

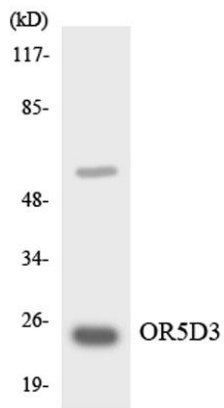
Olfactory receptors interact with odorant molecules in the nose, to initiate a neuronal response that triggers the perception of a smell. The olfactory receptor proteins are members of a large family of G-protein-coupled receptors (GPCR) arising from single coding-exon genes. Olfactory receptors share a 7-transmembrane domain structure with many neurotransmitter and hormone receptors and are responsible for the recognition and G protein-mediated transduction of odorant signals. The olfactory receptor gene family is the largest in the genome. The nomenclature assigned to the olfactory receptor genes and proteins for this organism is independent of other organisms.



Western Blot analysis of various cells using Olfactory receptor 5D3 Polyclonal Antibody diluted at 1:500



Western blot analysis of lysates from COLO205 cells and MCF-7 cells, using OR5D3 Antibody. The lane on the right is blocked with the synthesized peptide.



Western blot analysis of the lysates from HT-29 cells using OR5D3 antibody.